

**NIGHTHAWK®****Nighthawk® AX6**  
**6-Stream AX5200 WiFi Router**

## Leading the New Era of WiFi 6

Nighthawk® AX6 6-Stream AX5200 WiFi Router provides speeds up to 5.2Gbps so you can connect, stream, and download faster to newer mobile devices. Powerful 1.5GHz triple-core processor ensures superior performance for concurrent real-time applications such as multimedia streaming,

online gaming, and audio/video chats. This next-gen router is recommended for medium to large homes, suitable for up to 25 connected devices. With NETGEAR Armor™, you get complete cyber threat protection built into your router for an unlimited number of devices connected to your network,

including IoT devices, tablets, computers, and smartphones. Experience the ease of managing your kids' time online across their connected devices and promote healthy habits anywhere they go with NETGEAR Smart Parental Controls™ ∞.

∞ NETGEAR Smart Parental Controls™ are not available in all regions and countries. Visit [www.netgear.com/NETGEAR-SPC-availability](http://www.netgear.com/NETGEAR-SPC-availability) for availability.

**NETGEAR®**

**NIGHTHAWK®**

# Nighthawk® AX6 6-Stream AX5200 WiFi Router



## WiFi 6—Ready for Today and Tomorrow's Smart Home

Delivering four times better performance than AC WiFi, WiFi 6 allows more devices to connect and stream simultaneously, without impacting speed or reliability, by efficiently packing and scheduling data. Rising to the challenges of modern smart home demands, this new standard of WiFi is ready to support more devices with better reliability and faster speeds.

### Capacity

WiFi 6 gives you improved network capacity for more WiFi devices. Have more fun with the uninterrupted 4K streaming, gaming, and the smart home experience.

### Speed

Get ultra-fast wireless speeds with more connections for all devices with less congestion. You'll get some blazing connection speeds of more than one gigabit per second or more, 4K streaming, & VR/AR gaming.

### Range

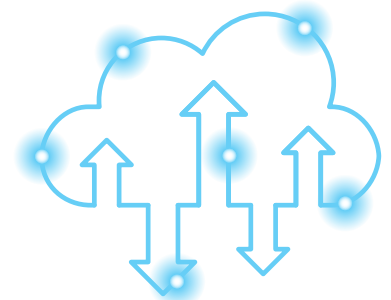
Experience reliable and stronger WiFi coverage indoors and outdoors for all your devices. High-performance antennas, pre-optimized for best performance, on the router amplify WiFi signals for maximized range and reliable coverage.

**NIGHTHAWK®****Nighthawk® AX6  
6-Stream AX5200 WiFi Router****6-Stream AX WiFi**

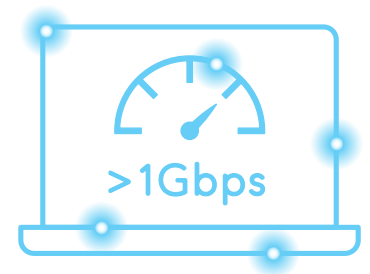
Stream smooth 4K UHD content to smart TVs, mobile devices, and gaming consoles.

**Faster Upload & Download Speeds**

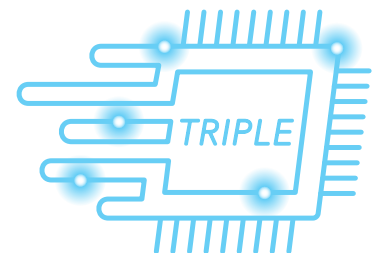
Faster WiFi download & upload speeds at the same time.

**Greater than 1Gbps WiFi Speeds**

Enjoy greater than 1Gbps WiFi speeds for blazing-fast streaming and downloading to newer mobile devices.

**Powerful Triple-core 1.5GHz Processor**

More processing power increases the overall performance of your network.

**NETGEAR®**

**NIGHTHAWK®**

# Nighthawk® AX6 6-Stream AX5200 WiFi Router

## Speed

Get ultra-fast wireless speeds for better 4K UHD streaming, gaming or video conferencing experience.



4.3X BETTER PERFORMANCE THAN AN AC ROUTER—6-stream WiFi with up to 5.2Gbps<sup>†</sup> for fast wireless speeds<sup>†</sup>



UP TO 5.2GBPS<sup>†</sup> SPEEDS—460+4800Mbps with 6-stream connectivity<sup>\*\*</sup>



160MHZ CHANNEL SUPPORT<sup>\*\*\*</sup>—Doubles the speeds as offered by 80MHz channels to provide Gigabit speeds for compatible mobile devices and laptops



SUPERSPEED USB 3.0 PORT—Up to 10x faster than USB 2.0



5 GIGABIT PORTS—Connect more wired devices for faster file transfer and uninterrupted connections with 1 WAN & 4 LAN Ethernet ports



1024-QAM—25% increased data efficiency and faster speeds than a 256-QAM router

## Capacity

Get better performance for all your smart home devices even when your family is busy streaming videos or uploading media files during the Internet rush hour.



MORE WIFI FOR MORE DEVICES—Allows efficient data transmission to devices simultaneously.<sup>§</sup>



AX OPTIMIZED POWERFUL PROCESSOR—1.5GHz triple-core processor ensures smooth 4K UHD streaming

## WiFi Range

Faster and expanded coverage throughout your home and for all your devices.



ULTIMATE RANGE—WiFi coverage throughout very large homes



MAXIMIZE RANGE—Four (4) high-power external antennas extend wireless range coverage indoors and out

# NIGHTHAWK®

## Nighthawk® AX6 6-Stream AX5200 WiFi Router

### Sharing

With NETGEAR, sharing across your network is fun and easy, such as accessing stored photos & music.



USB 3.0 PORT—Faster streaming, backup and easy access to your stored media

### Reliable Connections

There's nothing more frustrating than lost connections! With NETGEAR's advanced features & best-in-class technology, you'll reduce interference & enjoy more reliable WiFi connectivity.



BEAMFORMING+—Improve range and performance for both 2.4 and 5GHz devices



SIMULTANEOUS DUAL BAND WIFI—Reduces interference for better connections to more WiFi devices



ADDITIONAL DFS CHANNELS—Gives you an interference-free experience

### Ease Of Use

Start enjoying your new device faster than ever. NETGEAR wants to make sure installation and management is simple & easy, so you can connect quickly & make sure you stay that way!



NIGHTHAWK® APP—Easily set up your router and get more out of your WiFi. Includes access from anywhere to manage your network away from home



AX WIFI SUPPORTS ALL CURRENT WIFI DEVICES—WiFi 6 supports all current WiFi device and is backward compatible with WiFi 5 and earlier generation devices



VOICE CONTROLLED BY AMAZON ALEXA® & THE GOOGLE ASSISTANT—Control your NETGEAR WiFi network with simple voice commands

**NIGHTHAWK®****Nighthawk® AX6**  
**6-Stream AX5200 WiFi Router****Security**

Maintain high security across your network to ensure your privacy & family is safe while online. Whether it's preventing phishing & spyware or just limiting access for kids & guests, NETGEAR has you covered.



NETGEAR ARMOR™—Cybersecurity for your home<sup>††</sup>. Advanced cyber threat protection for your home network and your connected devices



NETGEAR SMART PARENTAL CONTROLS™—Easily manage your kids time online across their connected devices<sup>°°</sup>



VPN SUPPORT—On PC, MAC, & now also with OpenVPN Connect app on iOS & Android, securely access your home network & Internet connection from your mobile device remotely



STANDARDS-BASED WIFI SECURITY (802.11i, 128-bit AES encryption with PSK)



GUEST NETWORK—Separate and secure network for your guests



AUTOMATIC FIRMWARE UPDATE—Delivers latest security patches to the router

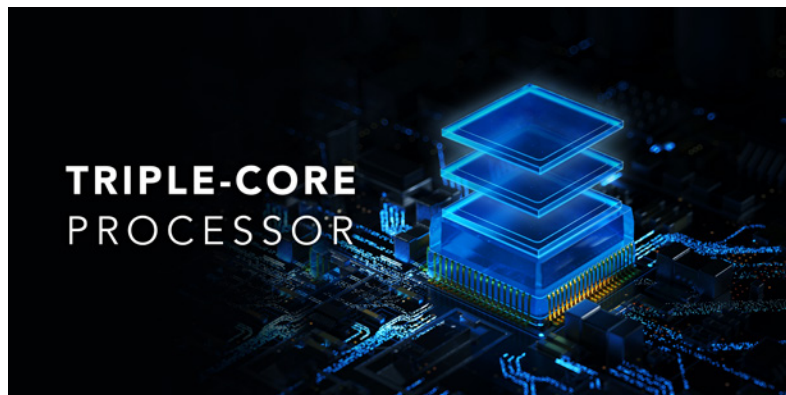


LATEST SECURITY STANDARD—Supports WPA3 the latest and cutting-edge Wi-Fi security protocol



**NIGHTHAWK®****Nighthawk® AX6**  
**6-Stream AX5200 WiFi Router****Powerful Triple-core Processor**

Nighthawk AX6 WiFi Router is powered by a powerful triple-core processor designed to transfer Multi-Gigs of data. Full-packet processing offload means zero load on the CPU. Enjoy smoother Ultra-HD 4K video streaming and gaming without interruptions.

**Gigabit WiFi to Mobile Devices**

Support for 160MHz channel allows the Nighthawk AX6 WiFi Router to stream at Gigabit speeds to supported mobile devices, which are increasingly used for video streaming or gaming.

**NETGEAR®**

**NIGHTHAWK®****Nighthawk® AX6**  
**6-Stream AX5200 WiFi Router****Nighthawk App**

The NETGEAR Nighthawk® App makes it easy to set up your router and get more out of your WiFi. With the app, you can install your router in a few steps—just connect your mobile device to the router network and the app will walk you through the rest. Once set up, you can use the intuitive dashboard to pause the Internet on your connected devices, run a quick Internet speed test, and much more!

- Anywhere Access—Easily monitor your home network anytime, anywhere
- Internet Speed Test—Check the broadband speeds from your service provider
- Pause Internet—Pause the Internet to any device
- Traffic Meter—Track Internet data usage
- Guest Networks—Set up separate WiFi access for guests
- Quick Setup—Get connected in just minutes
- Get it at [nighthawk-app.com](https://nighthawk-app.com)

**NETGEAR®**

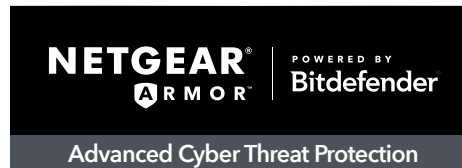


**NIGHTHAWK®**

# Nighthawk® AX6 6-Stream AX5200 WiFi Router

**NETGEAR Armor™**

Powered by Bitdefender®, NETGEAR Armor™ is one of the most comprehensive and advanced security solutions that protects you and your family from hackers and viruses. It's built into your NETGEAR router and is easily managed through the NETGEAR iOS or Android app. NETGEAR Armor™ includes Bitdefender's award-winning anti-virus, anti-malware, total protection suite for unlimited computers, smartphones, and tablets plus Bitdefender VPN to safeguard these devices—anywhere you go.

**Advanced Security Built into Your NETGEAR Router**

**PROTECTS ALL CONNECTED DEVICES**—Safeguard all your smart home devices, game consoles, TVs, and streaming players, as well as your tablets, computers, and smartphones.



**SENSITIVE DATA PROTECTION**—Keeps your data private by blocking attempts to send your login and banking info, SSNs, and more from being sent over unencrypted connections.



**ANOMALY DETECTION**—Blocks unusual behavior on your connected devices detected by our machine learning algorithm to protect your network against attacks.



**BRUTE FORCE PROTECTION**—Protects the entire network by preventing connected smart devices from being compromised by botnet attacks, such as credential and encryption key attacks.



**DDoS PROTECTION**—Prevents and protects your network against crippling denial-of-service attacks.



**EXPLOIT PREVENTION/IDS**—Protects your data and devices by blocking attacks—like malicious intrusions—that try to exploit vulnerabilities in your connected devices or software.



**AUTOMATIC THREAT BLOCKING**—Blocks viruses, ransomware, phishing, spoofing, and other advanced cyberattacks threatening your network and connected devices with vulnerabilities.



**WEB PROTECTION**—Instantly blocks webpages that possibly contain harmful malware, phishing, or other malicious content. (For Android and iOS devices)



**VULNERABILITY SCAN**—Closes any backdoor entries or hackers by identifying weak passwords or credentials and firmware or services with vulnerabilities.



**REAL-TIME ALERTS**—Notifications of detected and blocked threats and when new devices connect to your network.



**MANAGE NETGEAR ARMOR EASILY**—Stay in the know with your Nighthawk App—anywhere, anytime.

**Your Armor subscription also includes features that protect your devices outside your home:**

**BITDEFENDER SECURITY**—Install this protection on your desktop and laptop computers and mobile devices for an extra layer of cybersecurity at home and on-the-go.



**BITDEFENDER® VPN**—Encrypts your Internet connection to keep your online activity private, even while you're on unsecured public networks.



**ANTI-THEFT PROTECTION**—Remotely locate, lock, and wipe your lost or stolen devices.

**NETGEAR®**

**NIGHTHAWK®****Nighthawk® AX6**  
**6-Stream AX5200 WiFi Router****NETGEAR Smart Parental Controls™ ∞**

Creating the safest online experience for your kids is important and our built-in Smart Parental Controls makes it easy.

You are in control of your kids' Internet access:

- Pause the Internet for needed breaks
- Create custom profiles to manage online time for each kid

With the Premium subscription\*, you get even more insights into your kids' online activities to promote healthy habits:

- Get a detailed report of your kids' Internet usage and block any sites
- Customize filters for your kids and limit their Internet time

**Key Features:****PROFILES****PAUSE****CONTENT  
FILTER****TIME  
LIMITS****REWARDS****DEVICE  
USAGE****WEB  
HISTORY****OFFTIME****BEDTIME**

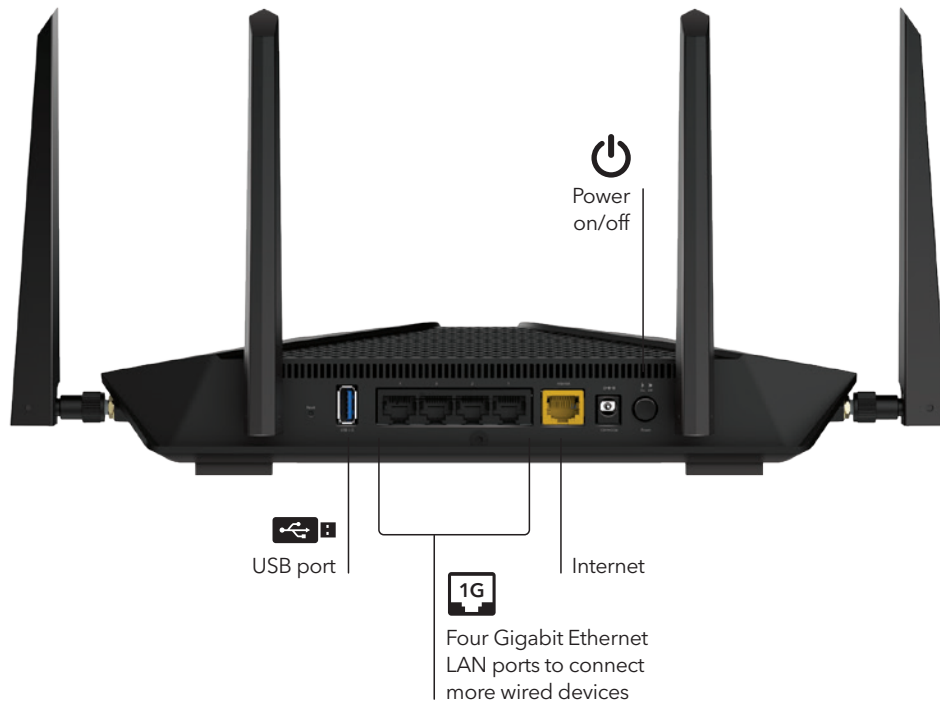
~NETGEAR Smart Parental Controls™ are not available in all regions and countries. Visit [www.netgear.com/NETGEAR-SPC-availability](http://www.netgear.com/NETGEAR-SPC-availability) for availability.

\* NETGEAR Smart Parental Controls™ Premium requires a paid subscription after the 30-day free trial. (No credit card required for the trial).  
Visit [netgear.com/spc](http://netgear.com/spc) for more information.

# NIGHTHAWK®

## Nighthawk® AX6 6-Stream AX5200 WiFi Router

### Connection Diagram



# NIGHTHAWK®

## Nighthawk® AX6 6-Stream AX5200 WiFi Router

### Package Contents

- NETGEAR® Nighthawk® AX6/6-stream AX5200 WiFi Router (RAX48)
- Ethernet cable
- 4 external antennas
- Quick start guide
- Power adapter

### Physical Specifications

- Dimensions: 11.65 x 8.11 x 2.25in (295.8 x 206 x 57.2mm)
- Weight: 1.25 lb (566 g)

### Technical Specifications

- Wi-Fi 6 (802.11ax) dual band WiFi (AX5200)
  - 2.4GHz AX: 2x2 (Tx/Rx) 256-QAM 20/40MHz, up to 460Mbps
  - 5GHz AX: 4x4 (Tx/Rx) 1024-QAM 20/40/80/160MHz, up to 4.8Gbps
  - Backwards compatible with 802.11a/b/g/n/ac WiFi
- Powerful 1.5GHz triple-core processor
- One (1) USB 3.0 port
- Memory: 256MB flash and 512MB RAM
- 160MHz channel support
- Additional DFS channels for interference free experience
- Longer range with 4 high-performance antennas
- Five (5) 10/100/1000 Mbps Gigabit Ethernet ports
  - 1 WAN & 4 LAN

### Key Features

- 4.3X better performance than an AC router—6-stream WiFi with up to 5.2Gbps for fast wireless speeds\*\*
- 160MHz channel support\*\*\*—Doubles the speeds as offered by 80MHz channels to provide Gigabit speeds for compatible mobile devices and laptops
- Powerful processor—1.5GHz triple-core processor ensures smooth 4K UHD streaming & gaming
- 4 Gigabit LAN Ethernet ports—Connect more wired devices for faster file transfer and uninterrupted connections
- NETGEAR Armor™—Advanced cyber threat protection for your home network and your connected devices††
- NETGEAR Smart Parental Controls™—Easily manage your kids time online across their connected devices™
- Nighthawk® App—Easily set up your router and get more out of your WiFi. Includes access from anywhere to manage your network away from home
- WiFi 6 supports all current WiFi devices and is backward compatible with WiFi 5 and earlier generation devices
- Works with Amazon Alexa® & the Google Assistant—Control your NETGEAR WiFi network with simple voice commands

### System Requirements

- Microsoft® Windows 7, 8, 10, Vista®, XP®, 2000, Mac OS®, UNIX®, or Linux®

- Microsoft® Internet Explorer® 11 or higher, Microsoft Edge, Google Chrome® 55 or higher, Firefox® 45 or higher, Safari® 10 or higher

### Security

- Standards-based WiFi Security (802.11i, 128-bit AES encryption with PSK)
- Automatic firmware update delivers latest security patches to the router
- Guest network access—separate & secure
- VPN Support—Secure access to your home network away from home
- Latest security standard—Supports WPA3 the latest and cutting-edge Wi-Fi security protocol
- NETGEAR Armor™—Advanced cyber threat protection for your home network and your connected devices††
- NETGEAR Smart Parental Controls™—Easily manage your kids time online across their connected devices™

### Warranty

- [www.netgear.com/warranty](http://www.netgear.com/warranty)
- Extend your warranty & technical support within 90 days of product purchase [US only]. Visit: [prosupport.netgear.com/home](http://prosupport.netgear.com/home)

### Support

- 90-day complimentary technical support following purchase from a NETGEAR authorized reseller
- Join the NETGEAR Community Forum. Visit <http://community.netgear.com>

This product comes with a limited warranty that is valid only if purchased from a NETGEAR authorized reseller.

90-day complimentary technical support following purchase from a NETGEAR authorized reseller.

† Maximum wireless signal rate derived from IEEE 802.11 specifications. Actual data throughput and wireless coverage will vary and may be lowered by network and conditions, including network traffic volume and building construction. NETGEAR makes no representations or warranties about this product's compatibility with future standards. Up to 5200Mbps wireless speeds achieved when connecting to other 802.11ax 5200 Mbps devices.

\*\* When working with 160MHz clients as compared to a 2x2 AC router that does not support 160MHz.

\*\*\* Requires client device that supports 160MHz bandwidth on WiFi.

§ Requires compatible AX clients with DL-OFDMA and UL-OFDMA support.

† As compared to an AC1200 2x2 router.

†† NETGEAR Armor™ requires a paid subscription after the initial 30-day free trial. Visit [netgear.com/armor](http://netgear.com/armor)

™ NETGEAR Smart Parental Controls™ are not available in all regions and countries. Visit [www.netgear.com/NETGEAR-SPC-availability](http://www.netgear.com/NETGEAR-SPC-availability) for availability. NETGEAR Smart Parental Controls™ Premium requires a paid subscription after the 30-day free trial. (No credit card required for the trial). Visit [netgear.com/spc](http://netgear.com/spc) for more information.

For indoor use only.

NETGEAR, the NETGEAR Logo, and Nighthawk are trademarks of NETGEAR, Inc. Mac, Mac OS, the Mac logo, and iPhone are trademarks of Apple Inc. App Store is a service mark of Apple Inc., registered in the U.S. and other countries. Google Play and the Google Play logo are trademarks of Google LLC. Any other trademarks mentioned herein are for reference purposes only. ©2021 NETGEAR, Inc.

NETGEAR, Inc. 350 E. Plumeria Drive, San Jose, CA 95134-1911 USA, [www.NETGEAR.com/support](http://www.NETGEAR.com/support)

D-RAX48-4

