

Installation

48-Port Gigabit Ethernet Smart Managed Plus Switch GS750E

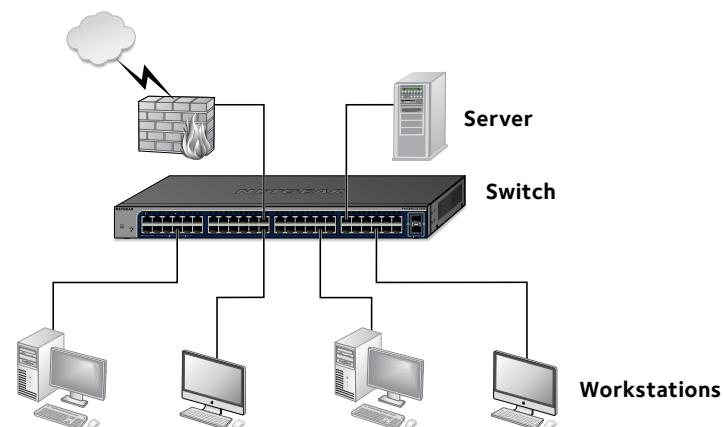


Package Contents

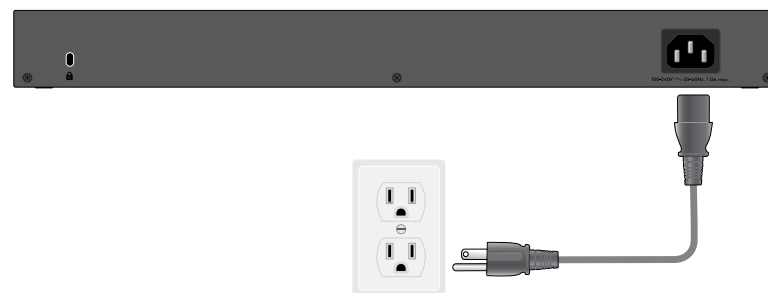
- NETGEAR 48-Port Gigabit Ethernet Smart Managed Plus Switch
- Rubber footpads for tabletop installation
- AC power cord (localized to country of sale)
- 19-inch rack-mount kit for rack installation

NETGEAR®

Step 1. Connect the equipment.



Step 2. Connect power.



Step 3. Check the status.



Power LED	Port LEDs (Ports 1–48)	SPD LED
On	1000 Mbps link	1 Gps link
Off	100 or 10 Mbps link	100 Mbps link
	Activity (blinking)	No link (off)
	No link (off)	

Configuring the Switch

Smart Managed Plus switches are plug-and-play, so they can be used without any configuration. You can also configure and manage additional advanced features of the switch either by using your computer's web browser or by installing the ProSAFE Plus Configuration Utility on your Windows-based computer.

Web Browser Access

You can configure a switch when it is connected only to your computer (off-network), or connected to your computer and your network (on-network).

➤ To use your web browser to configure your switch:

1. If you are configuring the switch off-network, record your computer's TCP/IP configuration settings, and then configure the computer with a static IP address of 192.168.0.210 and with 255.255.255.0 as the subnet mask.

Note: If you are unsure how to do this, visit netgear.com/support and search for Static IP address on computer.

2. Plug the switch into a power outlet and connect your computer to the switch using an Ethernet cable.
3. If you are configuring the switch on-network, connect the switch to your network with another Ethernet cable.
4. Open a web browser and enter the IP address of the switch.

If the switch is off-network or connected to a network with no DHCP server, use its default IP address, **http://192.168.0.239**. If the switch is connected to a network with a DHCP server, use the IP address that the DHCP server assigned to the switch. If you are unsure how to determine the IP address of the switch, you can use the ProSAFE Plus Configuration Utility.

5. Enter the password.
The default password is **password**.
6. Click the **Login** button.
You can now configure additional options for the switch in the web management interface.
7. When you finish configuring an off-network switch, return your computer to its original TCP/IP settings and connect the switch to your network using an Ethernet cable.

ProSAFE Plus Configuration Utility Access

The ProSAFE Plus Configuration Utility runs on Windows-based computers. Visit netgear.com/support/product/PCU to download the utility.

➤ To configure the switch:

1. Double-click the **ProSAFE Plus Utility** icon.
The configuration home page displays a list of Smart Managed Plus switches that it discovers on the local network.
2. Select the switch that you want to configure from the list.
3. When prompted, enter the password.
The default password is **password**.
4. Use the utility to configure the switch settings.
For a description of Smart Managed Plus features, see the *ProSAFE Plus Switch Utility User Guide*. You can access the user guide through links on the **Help** tab of the utility.

Specifications

Network Environment	
Network interface	RJ-45 connector for 10M/100M/1G copper connections; SFP port for 100M/1G fiber connections.
Network cable	Use Category 5e (Cat 5e) or better Ethernet cable.
Operating temperature	32° -122°F (0° -50°C)
Operating humidity	10%-90% relative humidity, noncondensing
Specifications	
Ethernet ports	48
SFP ports	2
Power (maximum)	100-240 VAC 50-60 Hz, 1A
Power consumption	30W maximum
Weight	7.17 lb (3.25 kg)
Dimensions (W x D x H)	17.3 in. x 8.0 in. x 1.7 in. (440 mm x 204 mm x 43 mm)

Support

Thank you for purchasing this NETGEAR product. You can visit www.netgear.com/support to register your product, get help, access the latest downloads and user manuals, and join our community. We recommend that you use only official NETGEAR support resources.

For the current EU Declaration of Conformity, visit

http://support.netgear.com/app/answers/detail/a_id/11621/.

For regulatory compliance information, visit netgear.com/about/regulatory/.

See the regulatory compliance document before connecting the power supply.



201-21687-01



NETGEAR INTL LTD
Building 3, University Technology Centre
Curraheen Road, Cork, Ireland

NETGEAR, Inc.
350 East Plumeria Drive
San Jose, CA 95134, USA

© NETGEAR, Inc., NETGEAR and the NETGEAR Logo are trademarks of NETGEAR, Inc. Any non-NETGEAR trademarks are used for reference purposes only.

May 2017