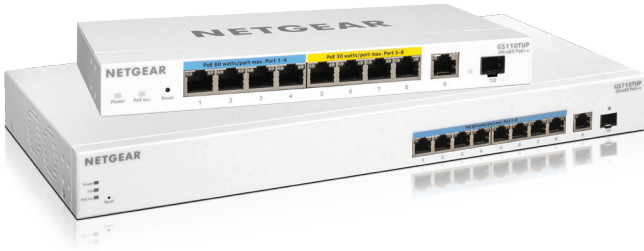


## 10-Port Gigabit Ethernet Ultra60 PoE++ Smart Managed Pro Switches



### The first Cloud Manageable PoE++ switch with Uninterrupted Ultra60 60W PoE++ power

As the leader in PoE switching, NETGEAR now brings to market the first Cloud Manageable PoE++ switch with Uninterrupted Ultra60 60W PoE++ power to your business together with NETGEAR's innovation "Uninterrupted PoE" for constant power to the devices even during switch firmware updates or reboots.

With IoT (Internet of Things) continuously introducing wired devices for smart home and smart building automation systems, the 802.3bt PoE standard is needed to support those devices that require greater power - power that the 802.3at standard (30W per port) cannot support.

With the growing demand in modern business organizations for more Powered Devices (PD) and higher Power-over-Ethernet (PoE) consumption per PD, NETGEAR proudly introduces the new Ultra60 PoE++ Smart Managed Pro Switches with the 802.3bt standard to provide up to 60W per port output PoE.

In addition to the IoT devices, these new Ultra60 PoE++ switches will support 802.11AX wireless access points, PTZ and 4K IP surveillance cameras, PoE lighting, PoE-powered audio speakers and AV encoders, as well as other high-powered devices. You can also power the Pre IEEE 802.3bt PoE standard power devices with the new Ultra60 PoE++ switches

NETGEAR Ultra60 PoE++ Smart Managed Pro Switches offer advanced Layer 2+/Lite Layer 3 features such as static routing, advanced PoE functionality and controls including NETGEAR's innovative Uninterrupted PoE, and Remote/Cloud management capability with enhanced performance. These switches are the ideal solution even for the most advanced business organizations looking for the best combination of features, performance, and value. These switches are purposely designed for converged networks where voice, video, and data are all carried on a single network platform.

The GS110TUP comes with 4 Ultra60 PoE++ Gigabit ports, 4 PoE+ Gigabit ports, 1 dedicated non-PoE Gigabit copper and 1 dedicated Gigabit SFP port. With a 240W total PoE budget, the GS110TUP is sufficient for 802.3at PoE+ devices as well as future-proofing for 802.3bt PoE++ deployment. The fanless, silent design makes it perfect for an office environment or any other noise-sensitive deployments. With versatile mounting options, this small is flexible enough to be placed on a desk, mounted to the wall, ceiling or pole, or mounted in a rack.

The GS710TUP comes with 8 Ultra60 PoE++ Gigabit ports, 1 dedicated non-PoE Gigabit copper and 1 dedicated Gigabit SFP port, and includes a 480W PoE budget, offering full 802.3bt 60W PoE output across the 8 Ultra60 PoE++ ports. The GS710TUP is rack-mountable, and with an operating noise of less than 35dBA, the switch can also be placed outside of the data closet without disrupting those working nearby.

To fully empower PoE applications, NETGEAR Insight Remote/Cloud Management is now available on these two new switch models as an optional management mode. Activating the NETGEAR Insight Cloud management, enables management features allowing businesses simpler configuration and deployment from anywhere using the NETGEAR Insight app from mobile devices or the Insight Cloud Portal from any device with a web browser.

## 10-Port Gigabit Ethernet Ultra60 PoE++ Smart Managed Pro Switches

### Highlights

#### More Powerful Switches for High Power Devices

- 4 x Ultra60 PoE++ Gigabit ports & 4 x PoE+ Gigabit ports with 240W PoE budget (GS110TUP)
- 8 x Ultra60 PoE++ Gigabit ports with 480W PoE budget (GS710TUP)
- 1 dedicated non-PoE Gigabit copper port
- 1 dedicated Gigabit SFP fiber port
- Support Pre IEEE 802.3bt PoE standard power devices

#### Fast and flexible solution for business data, voice and video converged network

- Non-blocking switching with 20Gbps
- Fanless for silent operation in noise sensitive environments (GS110TUP)
- Flexible mounting options
  - GS110TUP: Desktop or wall mount (VESA standard mounting holes), or rack-mountable with included mounting kit
  - GS710TUP: Rack-mountable with included mounting kit
  - Ideal compact size for discreet installations on ceilings or walls to easily power LED lighting or IP Cameras.

#### Powerful Connectivity and Security

- Layer 3 static routing with 32 routes (IPv4) for inter-VLAN local routing
- Advanced VLAN support for better network segmentation

- L2/L3/L4 access control lists (ACLs) for granular network access control including 802.1x port authentication
- Uninterrupted PoE for constant power to your devices even during switch firmware updates or reboots
- Advanced per port PoE controls for remote power management of PoE connected devices including operation scheduling
- Advanced QoS (Quality of Service) for traffic prioritization including port-based, 802.1p and L2/L3/L4 DSCP-based
- Auto "denial-of-service" (DoS) prevention
- IGMP Snooping and querier for multicast optimization
- Ingress and egress rate limiting and priority queuing for better bandwidth allocation
- Port mirroring for network monitoring
- Energy Efficient Ethernet (IEEE 802.3az) for maximum power savings
- IPv6 management: IPv6 QoS, IPv6 ACL, IPv6 multicast, and static and dynamic IPv6 address assignment
- Cable test to troubleshoot connection issues
- Easy-to-use web browser-based management GUI available in English, German and Japanese
- SNMP v1, v2c, v3 and RMON remote monitoring

#### Fully-integrated cloud-manageable devices

Optional remote/cloud management, maintenance, and monitoring capability with NETGEAR Insight. Instantly activate NETGEAR Insight Cloud management from the local device management web GUI after creating your NETGEAR Insight account. NETGEAR Insight Basic service allows for your first two devices to be managed remotely for free.

#### Smart IT, not Big IT

- Easy to manage via web-based management interface
- NETGEAR Smart Control Center on a Windows PC for multi-switch deployment
- NETGEAR Switch Discovery Tool (NSDT) to discover, register and access to the local browser interface to configure the switches
- Network Management System (NMS300), allowing all NETGEAR business products to be deployed and managed through this single interface

#### NETGEAR quality and reliability

- Worry-free Limited Lifetime Warranty\*, online technical chat support and Next Business Day (NBD) replacement



# 10-Port Gigabit Ethernet Ultra60 PoE++ Smart Managed Pro Switches

## Hardware at a Glance

	FRONT	REAR					SIDE
Model Name	Form-Factor	10/100/1000BASE-T RJ-45 Copper Ports	1G SFP	PoE++ Ports (60W/port)	PoE/PoE+ Ports	Power Supply (PoE Budget)	Fans
GS110TUP	Desktop	9	1 Dedicated	4	8	External DC 54V 4.7A (240W)	Fanless
GS710TUP	Rack mount	9	1 Dedicated	8	8	Internal (480W)	2

## Software at a Glance

LAYER 2+ / LAYER 3 LITE FEATURES								
Management	PoE Control Features	IPv4/IPv6 ACL and QoS	Static Routing	IPv4/IPv6 Multicast Filtering	VLANs	IEEE (802.3az) Energy Efficient Ethernet	Convergence	Link Aggregation/ Port Trunking
Web Browser-based GUI (HTTP/HTTPS), PC-Based Smart Control Center Utility (SCC), RMON, SNMP, NETGEAR Insight Cloud Management via mobile App and Insight Portal	PoE on/off, Dynamic PoE budget allocation, PoE class override, PoE Power Usage Metering, PoE scheduling, Uninterrupted PoE	L2, L3, L4 Ingress	IPv4 32 Routes	IGMP Snooping, Querier, Fast Leave, L2 Multicast Router	Static, Dynamic, VoIP, Voice, Video, 8K Max MAC (64 VLANs), Protocol based, GARP, GVRP	Yes	LLDP-MED, RADIUS, 802.1X	LACP and Manual Static LAGs (up to 4 LAGs with max 8 members)

## Performance at a Glance

Model Name	Packet Buffer	CPU	ACL	MAC Address Table ARP Table VLANs	Fabric	Latency (64-Byte Packet)	IPv4 Static Routing	Multicast IGMP Group
GS110TUP	512 KB	500MHz single core 128MB RAM 32MB SPI FLASH	100 shared (ingress)	8K Max MAC 64 VLANs	20 Gbps line-rate	1G Copper: < 3.9 μs; 1G Fiber: < 3.9 μs	32	256
GS710TUP								

## Features and Benefits

Hardware Features	
Fully-integrated Cloud-manageable Devices	Require no additional hardware (cloud keys, network portals, local servers, VPN or proxy appliances etc) to directly connect to the cloud and allow remote management. No additional hardware or software. Just switch to Insight Cloud Management mode through Web browser-based User Interface and go.
1000BASE-T Copper Ethernet and PoE+ and PoE++ connections	Supports 802.3bt type 3 (60W/port) devices, pre IEEE 802.3bt PoE standard devices, as well as all 802.3at (30W/port) and 802.3af (15.4W/port) devices. Good for high-density VoIP, surveillance and Wi-Fi AP deployments, scalable for future growth. Never face the risk of running out of PoE ports or PoE power budget.
1000BASE-X SFP ports	One dedicated Gigabit SFP port provides a fiber uplink without sacrificing any downlink copper Gigabit Ethernet port, and across long distances. Support for Fiber and Copper modules.
Silent Acoustics (GS110TUP)	Fanless design allows for silent operation, great for deployment in noise-sensitive environments.
Energy Efficient Ethernet (IEEE 802.3az)	Maximum power reduction for ongoing operation cost savings.
Desktop, wall/ceiling-mount (VESA holes available) and rack mount (kit available)	Flexible deployment on desktop, wall, ceiling or other location using 100mm VESA-compliant mounts on GS110TUP. Both GS110TUP and GS710TUP support rack mount. Great for deployments of PoE-powered LED lighting or IP Cameras.
Kensington Lock Slot	Prevent theft, removal, or tampering when used for desktop deployment.
Software Features	
Remote setup, management, maintenance and monitoring anywhere, anytime, from your mobile device, PC, Mac, or tablet	Locally or remotely setup, configure, manage, monitor or even troubleshoot your network from anywhere, anytime. Check network status, view dashboards for network health and activity, power cycle PoE ports, etc, and update firmware remotely. No need to be on-site, open up ports to your network, or VPN into it.
Auto-join and Configure (Zero-Touch Provisioning)	Additional Insight Managed devices added to the network automatically inherit settings and configuration.
Multi-site, Multi-network Single Pane-of-Glass View	View and configure multiple networks across multiple sites, all from one single app; NETGEAR Insight.
Comprehensive IPv6 Support for Management, ACLs and QoS	Build current network with future in mind. Ensure investment protection and a smooth migration to an IPv6-based network without switch replacement.
IPv4 Static Routing	A simple way to provide segmentation of the network with internal routing through the switch - reserving the router for external traffic routing only, making the entire network more efficient.
Robust security features: <ul style="list-style-type: none"> <li>• 802.1x authentication (EAP)</li> <li>• Port-based security by locked MAC</li> <li>• ACL filtering to permit or deny traffic based on MAC and IP addresses</li> </ul>	Build a secured, converged network with all types of traffic by preventing external attacks and blocking malware while allowing secure access for authorized users.
Comprehensive QoS features: <ul style="list-style-type: none"> <li>• Port-based or VLAN 802.1p-based prioritization</li> <li>• Layer 3-based (DSCP) prioritization</li> <li>• Port-based egress rate limiting</li> </ul>	Advanced controls for optimized network performance and better delivery of mission-critical traffic such as voice and video.

## 10-Port Gigabit Ethernet Ultra60 PoE++ Smart Managed Pro Switches

Software Features (continued)	
Uninterrupted PoE	Keep PoE power on even when the switch is updating firmware or performing a software reboot. Ideal when powering IP Cameras and lights for continuous feed and power.
Auto-VoIP, Auto-Voice VLAN, and Auto-Video VLAN	Automatic Voice over IP prioritization (Auto-VoIP) simplifies most complex multi-vendor IP telephone deployments either based on protocols (SIP, H.323 and SCCP) or on OUI bytes (default database and user-based OUIs) in the phone source MAC address, providing the best class of service to VoIP streams (both data and signaling) over other ordinary traffic by classifying traffic, and enabling correct egress queue configuration. Similarly, Auto-Video VLAN enables IGMP snooping to minimize broadcast streams.
IGMP Snooping and MLD Snooping	Facilitate fast receiver joins and leaves for multicast streams. Save cost and improve network efficiency by ensuring multicast traffic only reaches designated receivers without the need of an extra multicast router.
Protected Ports	Ensure no exchange of unicast, broadcast, or multicast traffic between the protected ports on the switch, thereby improving the security of your converged network. This allows your sensitive phone conversations to stay private and your surveillance video clips can be forwarded to their designated storage device without leakage or alteration.
DHCP Snooping	Ensure IP address allocation integrity by only allowing DHCP messages from trusted DHCP servers and dropping malformed DHCP messages with a port or MAC address mismatch.
Dynamic VLAN Assignment (RADIUS)	IP phones and PCs can authenticate on the same port but under different VLAN assignment policies. Users are free to move around and enjoy the same level of network access regardless of their physical location on the network.
Port Trunking/Link Aggregation (LACP)	Build up bigger bandwidth to support aggregated uplink/downlink traffic or to provide redundant link(s). Aggregate up to 8 ports for 8Gbps connections.
Loop Prevention and Auto-DoS Prevention	Detect and prevent (auto port shutdown) accidental network loops and protect against DoS attacks.
PoE Timer and Scheduling	Allows IT administrators to increase network security, better utilize network resources and conserve energy by scheduling or remotely controlling on/off of PoE ports.
Port Mirroring and Cable Test	Many-to-one port mirroring for better and quicker network diagnostics and troubleshooting. Cable test easily identifies bad Ethernet cables.
Dual Firmware Images	Dual firmware images for transparent firmware updates with minimum service interruption
Firmware Updates from Cloud	Direct cloud-to-device firmware updates, initiated and/or scheduled using the Insight app, all from the palm of your hand, anytime, anywhere when using NETGEAR Insight management.
Multiple Language Local GUI	Product documentation and local-only web user interfaces are translated, giving you the ability to select your preferred language <sup>‡</sup> .

<sup>‡</sup> English, German, and Japanese are the current supported languages in the local-only web GUI. The Insight mobile app and Insight Cloud Portal support local languages per the device used (phone or computer browser).

## Simply Activate NETGEAR Insight Cloud Management to manage your network. Anytime. Anywhere.

By activating the NETGEAR Insight Cloud management, the users will enable fundamental management features allowing businesses simpler configuration and deployment from anywhere using the NETGEAR Insight app from mobile devices or the Insight Cloud Portal from any device with a web browser.

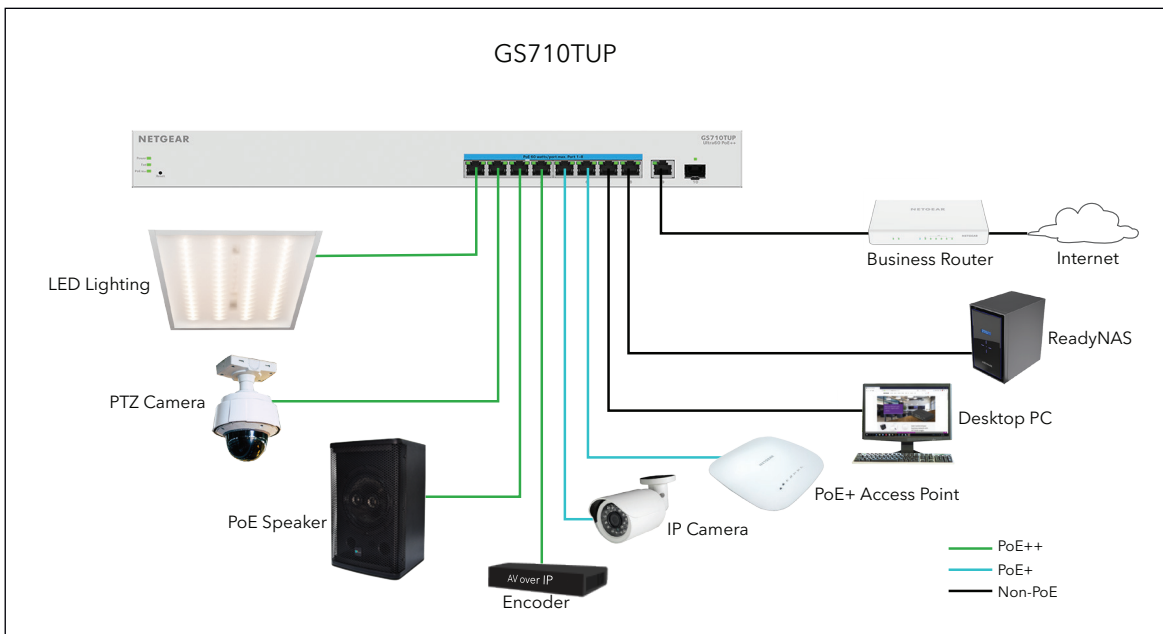
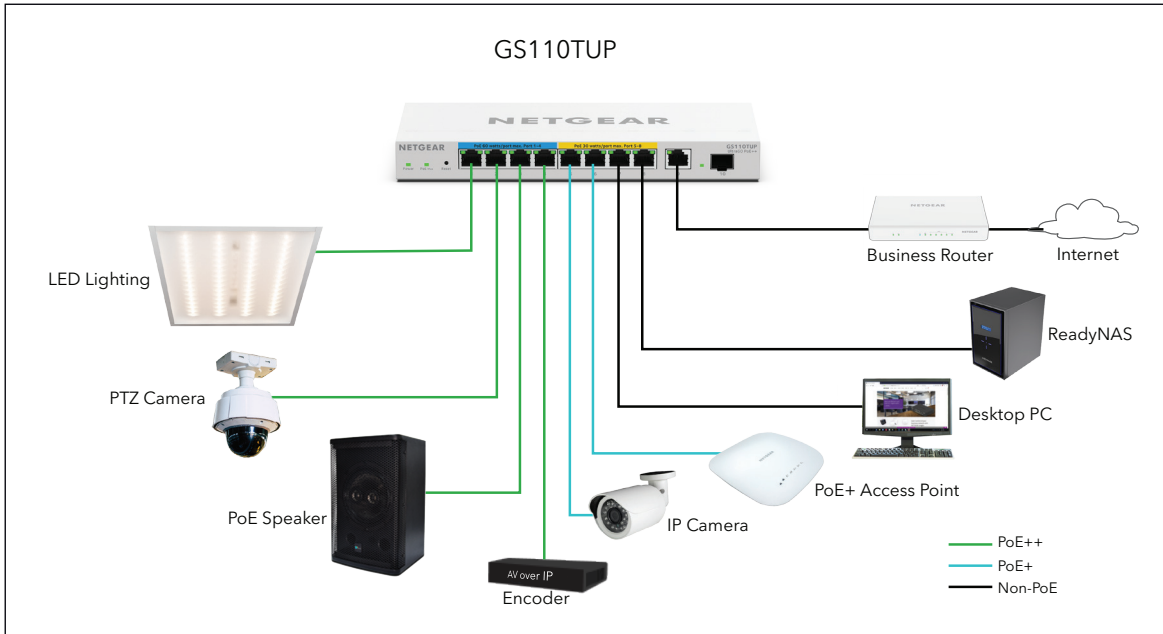
Unique advanced management features of these Insight Managed devices include:

- Remote monitoring and management with performance dashboards and troubleshooting features including remote reboot, port and PoE advanced configuration including remote enable/disable/power-cycle, PoE scheduling, and firmware updates with auto-schedule mode
- Single pane-of-glass multi-device, multi-network, and multi-site remote monitoring and notifications with the NETGEAR Insight app
- Full-fledged local or remote access for configuration, management, and monitoring on a larger display using your tablet, laptop, or desktop computer through the NETGEAR Insight Cloud Portal
- Configurable in-app and email alerts and notifications
- Auto-join and configure (zero-touch provisioning) for additional Insight Managed devices added to the network
- Centralized network configuration (policies) across Insight Managed Switches, Access Points, and ReadyNAS storage for VLANs, ACLs, QoS, LAGs, etc.
- Cloud-based network administration, monitoring, and firmware management

For more information about NETGEAR Insight-manageable device settings, please see at:  
<https://www.netgear.com/support/product/Insight.aspx>

### Application Sample

Power The Devices in Your Business



\* GS110TUP and GS710TUP can support, but are not limited to, power the devices shown in the above examples.



## Technical Specifications

Technical Specifications	GS110TUP	GS710TUP
Gigabit Ethernet RJ-45 Copper ports (10M/100M/1G) - 1000BASE-T	9	9
PoE/PoE+ ports	8	8
PoE++ ports (802.3 bt Type3 60w/port)	4	8
Gigabit SFP (fiber) ports (100M/1G) - 1000BASE-X	1 (dedicated)	1 (dedicated)
Power Supply	External DC 54V 4.7A	Internal Power Supply
Kensington Lock	Yes (rear)	
<b>LEDS</b>		
Front (per device)	Power (with Cloud Mode Indicator), PoE Max	Power (with Cloud Mode Indicator), PoE Max, Fan
Front (port side) (per port)	Speed/Link/Activity (left), PoE Power (right)	Speed/Link/Activity (left), PoE Power (right)
<b>Unified Network Management (Discovery, Setup, Monitoring, and Management) through NETGEAR Insight Cloud Management</b>		
Discovery, setup, monitoring and management	NETGEAR Insight mobile app on phone or tablet; Insight Cloud Portal from PC, Mac, or tablet web browser	
Remote/Cloud management	Anywhere, anytime, from the palm of your hand using Insight mobile app or from any PC, Mac, or tablet web browser using the Insight Cloud Portal	
Centralized network configuration (policies)	Centralized network configuration (policies) across Insight Managed Switches, Wireless Access Points, and Business-class ReadyNAS Storage for VLANs, ACLs, QoS, and LAGs	
Device auto-join and configure (zero-touch provisioning)	Additional Insight Managed devices added to the network automatically inherit the network configuration	
Multi-site, multi-network single pane-of-glass view	Manage multiple sites, locations, and networks in a single view using the Insight mobile app or Insight Cloud Portal	
Multi-switch, multi-port concurrent configuration for ACLs, VLANs, QoS, PoE, etc	Apply settings and policies on multiple ports across multiple switches all at the same time using the Port Config Wizard	
<b>Performance Specifications</b>		
CPU	500MHz single core 128MB RAM 32MB SPI FLASH	
Packet buffer memory (Dynamically shared across only used ports)	512 KB	
Forwarding modes	Store-and-forward	
Bandwidth (non-blocking, full duplex)	20Gbps	
Priority queues	8	
Priority queuing	Weighted Round Robin (WRR) and Strict Priority	
MAC Address database size (48-bit MAC addresses)	8K	
Multicast groups	256	
Number of IPv4 static routes	32	
Number of VLANs	64	



**10-Port Gigabit Ethernet Ultra60 PoE++  
 Smart Managed Pro Switches**

<b>Performance Specifications</b>	<b>GS110TUP</b>	<b>GS710TUP</b>
Number of DHCP snooping bindings	256	
Access Control Lists (ACLs)	100 shared for MAC, IP and IPv6 ACLs	
Packet forwarding rate (64 byte packet size) (Mfps or Mpps)	14.8	
1G Copper standard latency (µsec) (64-byte; 1518-byte; 9216-byte frames)	64-byte: 3.855 µsec 1518-byte: 4.054 µsec 9216-byte: 3.791 µsec	64-byte: 3.859 µsec 1518-byte: 4.063 µsec 9216-byte: 3.789 µsec
1G Copper Uplink latency (µsec) (64-byte; 1518-byte; 9216-byte frames)	64-byte: 3.887 µsec 1518-byte: 4.087 µsec 9216-byte: 3.820 µsec	64-byte: 3.887 µsec 1518-byte: 4.087 µsec 9216-byte: 3.820 µsec
1G SFP Fiber latency (µsec) (64-byte; 1518-byte; 9216-byte frames)	64-byte: 3.887 µsec 1518-byte: 4.087 µsec 9216-byte: 3.820 µsec	64-byte: 3.887 µsec 1518-byte: 4.087 µsec 9216-byte: 3.820 µsec
Jumbo frame support	Up to 10K packet size	
Acoustic noise level @ 25° C (dBA) (ANSI-S10.12)	0 dBA (fanless)	35dBA
Mean Time Between Failures (MTBF) @ 25° C	695,508 hrs (79 yrs)	643,873 hrs (73 yrs)
<b>POE Configuration</b>		
Number of PoE (802.3af)/PoE+ (802.3at) ports	8 PoE+	8 PoE+
Number of PoE++ (802.3bt) ports (Type3 60W/port)	4 PoE++	8 PoE++
Total PoE power budget (watts)	240W	480W
Advanced per-port PoE controls (enable/disable/power limit)	Yes	
Advanced per-port PoE scheduling/timers	Yes	
Uninterrupted PoE	Yes	
<b>L2 Services - VLANS</b>		
IEEE 802.1Q VLAN Tagging	Yes	
Protocol-based VLANs	Yes	
MAC-based VLANs	Yes	
<b>L2 Services - Availability</b>		
Broadcast, multicast, unknown unicast storm control	Yes	
IEEE 802.3ad - LAGs (LACP)	Yes	
IEEE 802.3x (full duplex and flow control)	Yes	
IEEE 802.1D Spanning Tree Protocol	Yes	
IEEE 802.1w Rapid Spanning Tree Protocol	Yes	
IEEE 802.1s Multiple Spanning Tree Protocol	Yes	
<b>L2 Services - Multicast Filtering</b>		
IGMP snooping (v1, v2 and v3)	Yes	
MLD snooping support (v1 and v2)	Yes	
IGMP snooping queries	Yes	

10-Port Gigabit Ethernet Ultra60 PoE++  
Smart Managed Pro Switches

L2 Services - Multicast Filtering	GS110TUP	GS710TUP
Block unknown multicast		Yes
Multicast groups		256
L3 Services - DHCP		
DHCP client		Yes
DHCP snooping		Yes
Number of DHCP snooping bindings		256
L3 Services - Routing		
IPv4 static routes		32
VLAN routing		Yes
Host ARP table / NDP cache (number of entries)		512 ARP / NDP
ICMP Router Discovery Protocol (IRDP)		Yes
Link Aggregation		
IEEE 802.3ad - LAGs (LACP)		Yes
Manual Static LAG		Yes
# of Static or LACP LAGs # of members in each LAG		4 LAGs with max 8 members in each LAG
Network Monitoring and Discovery Services		
802.1ab LLDP		Yes
LLDP-MED		Yes
SNMP		Yes
RMON group 1,2,3,9		Yes
Network Security		
IEEE 802.1x		Yes
Guest VLAN		Yes
RADIUS-based VLAN assignment via .1x		Yes
MAC-based .1x		Yes
RADIUS accounting		Yes
Access Control Lists (ACLs)		L2 / L3 / L4
IP-based ACLs (IPv4 and IPv6)		Yes
MAC-based ACLs		Yes
TCP/UDP-based ACLs		Yes
MAC lockdown		Yes
MAC lockdown by the number of MACs		Yes
Control MAC # Dynamic learned entries (per port)		4096
Control MAC # static entries (per port)		48
IEEE 802.1x RADIUS port access authentication/type		Yes
Port-based security by locked MAC addresses		Yes

## 10-Port Gigabit Ethernet Ultra60 PoE++ Smart Managed Pro Switches

<b>Network Security</b>	<b>GS110TUP</b>	<b>GS710TUP</b>
Broadcast, multicast, unknown unicast storm control		Yes
DoS attacks prevention		Yes
Protected ports		Yes
<b>Quality of Service</b>		
Port-based rate limiting		Yes, ingress and egress
Port-based QoS		Yes
Support for IPv6 fields		Yes
DiffServ QoS		Yes, ingress
IEEE 802.1p COS		Yes
Destination MAC and IP		Yes
IPv4 and v6 DSCP		Yes
IPv4 and IPv6 ToS		No
TCP/UDP-based		Yes
Weighted Round Robin (WRR)		Yes
Strict priority queue technology		Yes
Auto-VoIP VLAN / Auto-Voice VLAN	Yes, based on OUI bytes (default database and user-based OUIs) in the phone source MAC address	
Auto-VoIP	Yes, based on protocols (SIP, H.323 and SCCP). Prioritizes traffic to a higher queue.	
Voice VLAN	Yes, based on either VLAN ID or 802.1p priority, packets are passed onto the connecting VoIP phone using LLDP-MED.	
Auto-Video VLAN		Yes
<b>Other Features</b>		
Advanced per-port PoE controls (enable/disable/power limit)		Yes
Advanced per-port PoE scheduling		Yes
Loop detection & prevention		Yes (both)
DNS Client		Yes
Option to enable/disable BPDU flooding when STP is disabled		Yes
Option to enable/disable the flooding of EAPOL when 802.1x is disabled		Yes
<b>Management, Monitoring &amp; Troubleshooting</b>		
Cloud/Remote management		Yes
Insight mobile app & Insight Cloud Portal management		Yes
uPnP Discovery		Yes
Bonjour Discovery		Yes
Networking monitoring		Yes
Data/performance logs		Yes
Centralized network configuration/policies (network-centric management)		Yes

## 10-Port Gigabit Ethernet Ultra60 PoE++ Smart Managed Pro Switches

<b>Management, Monitoring &amp; Troubleshooting</b>	<b>GS110TUP</b>	<b>GS710TUP</b>
Device auto-join and configure (zero-touch provisioning)		Yes
Multi-site, multi-network single pane-of-glass view		Yes
Multi-switch, multi-port concurrent configuration		Yes
Network/global password (for all Insight Managed devices on a network)	Yes (per network/subnet via NETGEAR Insight mobile app and Insight Cloud Portal)	
Password management		Yes
IP Access List		Yes
Configurable management VLAN		Yes
Admin access control via RADIUS and TACACS+		Yes
IPv6 management		Yes
SNTP client over UDP port 123		Yes
Firmware upgrade direct from Cloud (via mobile device or Insight Cloud Portal)	Yes* (when using NETGEAR Insight management mode)	
SNMP v1/v2c		Yes
SNMP v3 with multiple IP addresses		Yes
RMON group 1,2,3,9		Yes
Smart Control Center (SCC) for multi-switch management		Yes
Port mirroring		Yes
Many-to-one port mirroring		Yes
Cable test utility		Yes
Ping and tracerout client		Yes
Local-only web browser-based management GUI with multiple language support*		Yes
TLS Web-based access (version)		Yes (v1.2)
HTTP/TFTP firmware update		Yes
Dual software (firmware) image		Yes
Memory and flash log		Yes
Syslog (Server)		Yes
<b>Power Consumption</b>		
Max power (worst case, all ports used, line-rate traffic) (Watts)	11.1 W	22.9 W
Max power (worst case, all ports used, full PoE, line-rate traffic) (Watts)	276.8 W	554.0 W
Min power (link-down standby) (Watts)	7.4 W	21.2 W
Heat Dissipation (min w/o PoE and max with full PoE) (BTU/hr)	Max: 945.00 BTU/hr Min: 25.26 BTU/hr	Max: 1891.36 BTU/hr Min: 72.38 BTU/hr
Energy Efficient Ethernet (EEE) IEEE 802.3az	Yes (deactivated by default)	
Auto power down	Yes (deactivated by default)	
Fan(s) (temperature- and load-based speed control)	Fanless	2

10-Port Gigabit Ethernet Ultra60 PoE++  
Smart Managed Pro Switches

Physical Specifications	GS110TUP	GS710TUP
Dimensions (W x D x H)	236 x 101 x 27 mm ( 9.3 x 4.0 x 1.1 in)	440 x 204 x 43 mm ( 17.3 x 8.0 x 1.7 in)
Weight	0.63kg (1.39lb)	2.99kg (6.59lb)
Mounting options	Desktop, wall mount with VESA-standard (100mm), rack mount	Rack mount
Environmental Specifications		
Operating		
Operating Temperature	0° to 40°C (32° to 104°F)	0° to 50°C (32° to 122°F)
Humidity	95% maximum relative humidity (RH), non-condensing	
Altitude	10,000 ft (3,000 m) maximum	
Storage		
Storage Temperature	-20° to 70°C (- 4° to 158°F)	
Humidity (relative)	95% maximum relative humidity (RH), non-condensing	
Altitude	10,000 ft (3,000 m) maximum	
Warranty and Support		
Hardware Limited* Warranty (Switch)	Limited Lifetime* (switch only)	Limited Lifetime* (switch and power supply)
External Power Adapter Limited Warranty (GS110TUP Only)	2 years (external power adapter)	N/A
Next-Business-Day (NBD) Replacement	Limited Lifetime*	
Technical support via phone	90 days free from date of purchase*	
24x7 Online Chat Technical support	Limited Lifetime*	
ProSUPPORT OnCall 24x7 Service Packs**	Category 1 PMB0311-10000S PMB0331-10000S PMB0351-10000S	
Package Content		
Smart Managed Pro Switch	✓	✓
Power Adapter	✓	N/A
Power Cord (localized to region of sale)	✓	✓
Mounting Kit	Wall mount and rack mount	Rack mount
Quick Installation Guide	✓	✓

‡ English, German, and Japanese are the current supported languages in the local-only web GUI. The Insight mobile app and Insight Cloud Portal support local languages per the device used (phone or computer browser).

## Ordering Information

Ordering Information	
GS110TUP-100NAS	North America, Latin America
GS110TUP-100EUS	Europe
GS110TUP-100AJS	Japan
GS110TUP-100PRS	China
GS710TUP-100NAS	North America, Latin America
GS710TUP-100EUS	Europe
GS710TUP-100AJS	Asia Pacific
GS710TUP-100PRS	Chin
Optional Modules, Software Licenses and Accessories	
AGM731F	SFP Transceiver 1000BASE-SX (Short range, multimode)
AGM732F	SFP Transceiver 1000BASE-LX (Long range, single mode)
AGM734-10000S	SFP Transceiver 1000BASE-T Copper RJ45 GBIC

\*This product comes with a limited warranty that is valid only if purchased from a NETGEAR authorized reseller, and covers unmodified hardware, fans and internal power supplies - not software or external power supplies, and requires product registration at <https://www.netgear.com/business/registration> within 90 days of purchase; see <https://www.netgear.com/about/warranty> for details. Intended for indoor use only.

\*\*The NETGEAR OnCall 24x7 contract provides unlimited phone, chat and email technical support for your networking product.

† NETGEAR #1 in US Market Share according to NPD data for Unmanaged and Smart Switches, September 2019. NETGEAR #1 in Europe Market Share according to Context data for Unmanaged and Smart Switches, September 2019.

NETGEAR, the NETGEAR Logo, and NETGEAR Insight are trademarks of NETGEAR, Inc. in the United States and/or other countries. Other brand names mentioned herein are for identification purposes only and may be trademarks of their respective holder(s). Information is subject to change without notice. ©NETGEAR, Inc. All Rights reserved.  
NETGEAR, Inc. 350 E. Plumeria Drive, San Jose, CA 95134-1911 USA, 1-888-NETGEAR (638-4327), E-mail: [info@NETGEAR.com](mailto:info@NETGEAR.com), [www.NETGEAR.com](http://www.NETGEAR.com)