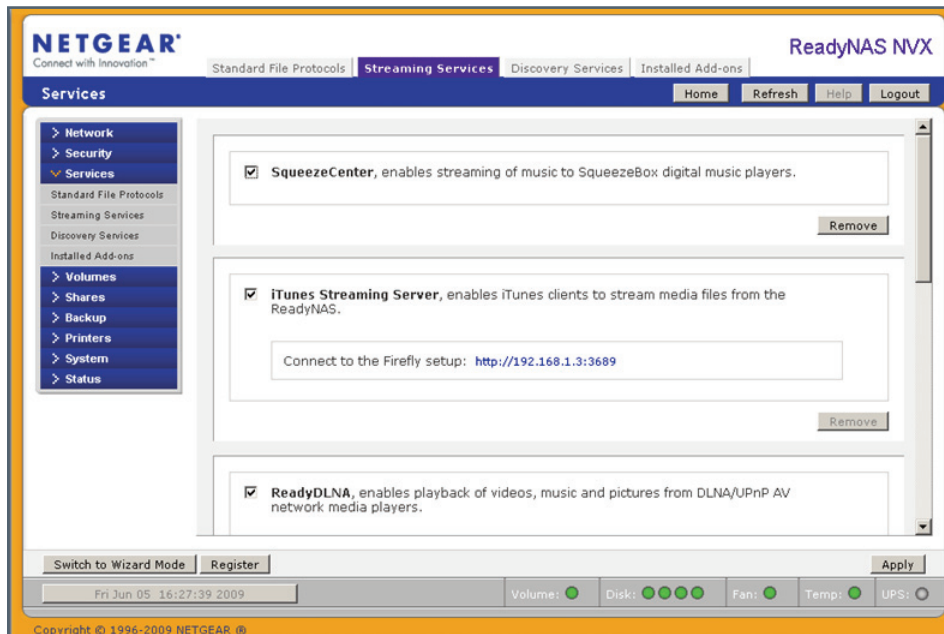


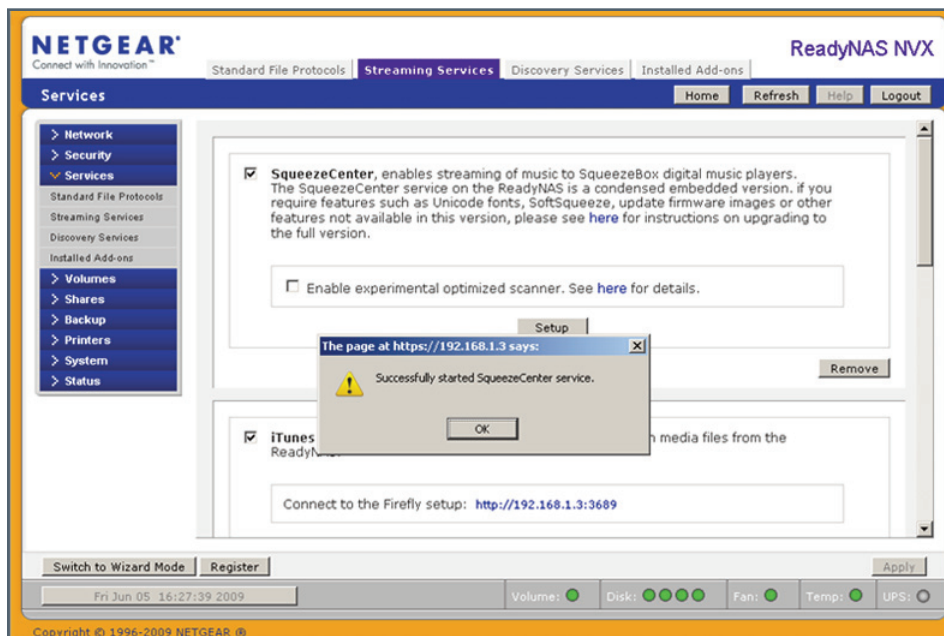
How To Set Up Your Logitech Squeezebox Boom with ReadyNAS[®]

Configuring ReadyNAS® to stream music to your Logitech Squeezebox Boom is quickly accomplished in just a few easy steps:

- Ensure that you can connect wirelessly to a DHCP enabled network (typical home network)
- Open the Frontview GUI on your ReadyNAS and select the **“Streaming Services”** tab
- Select **“SqueezeCenter”** and **“Apply”**



In a moment, you will receive confirmation that the service has been started.



An experimental optimized scanner is also available with the SqueezeCenter service to provide a much faster scanning experience for those with a large library of media files. To enable the experimental scanner, select it. Because it's experimental, it may not be compatible with every system. If you encounter any compatibility issues, simply deselect this option to use the default scanner.

Now you're ready to configure your Squeezebox Boom. Power it up and follow the on screen instructions to connect to your wireless network.

Once you have successfully connected your Squeezebox Boom to your network, the menu should prompt you to select your music source. Use the wheel to select your ReadyNAS.

That's it. Setup is now complete and you can begin streaming music from your ReadyNAS.

NETGEAR, the NETGEAR logo, Connect with Innovation and ReadyNAS are trademarks and/or registered trademarks of NETGEAR, Inc. and/or its subsidiaries in the United States and/or other countries. Other brand names mentioned herein are for identification purposes only and may be trademarks of their respective holder(s). Information is subject to change without notice. © 2010 NETGEAR, Inc. All rights reserved.