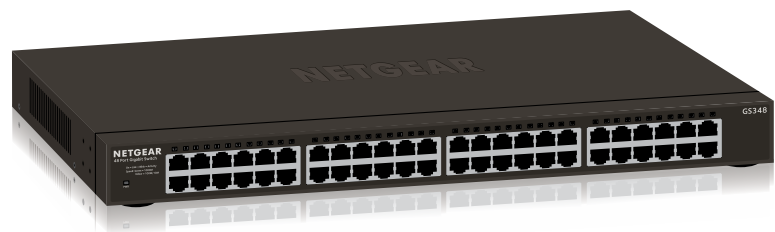


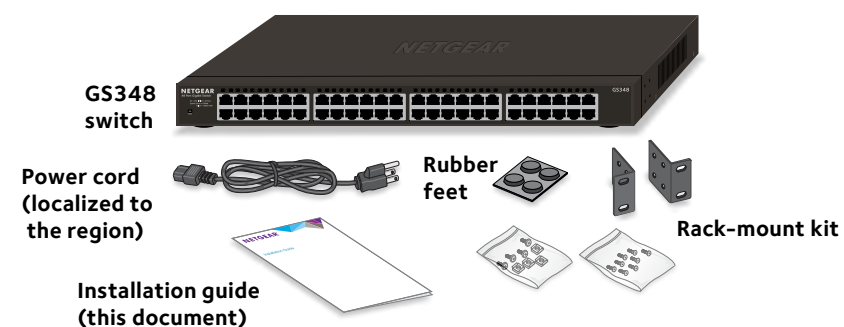
Installation

ProSAFE 48-port Gigabit Unmanaged Ethernet Rackmount Switch

Model GS348



Package Contents



NETGEAR

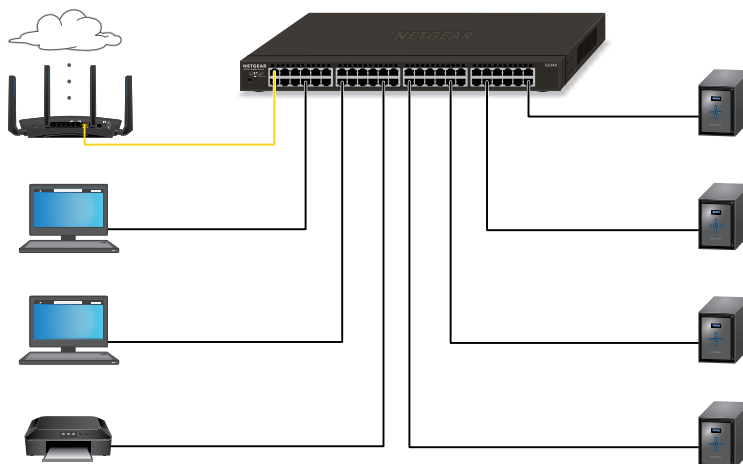
Step 1: Install the Switch

You can install the switch on a flat surface or in a rack. For information about how to rack-mount the switch, see [Rack-Mount the Switch](#) on the other side of this document.

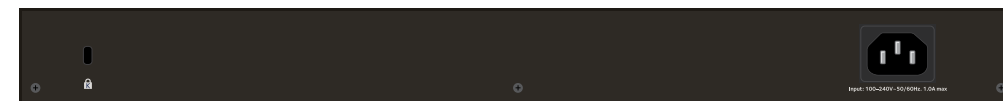
➤ To install the switch on a flat surface:

1. Attach the rubber feet that came in the package with the switch.
2. Make sure that the switch is positioned with at least 2 inches of space on all sides for ventilation.

Step 2: Connect Devices



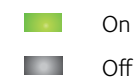
Step 3: Connect Power



Step 4: Check the Status



Power LED



On

Off

Port LEDs (Ports 1–48)



1000 Mbps link



100 or 10 Mbps link



Activity (blinking)

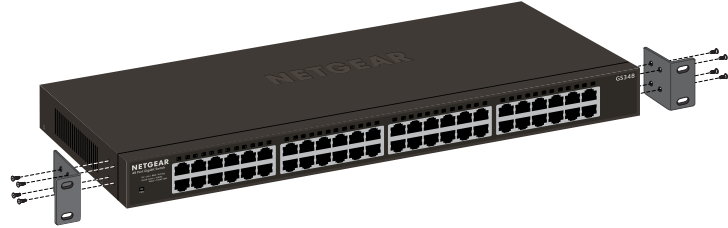


No link (off)

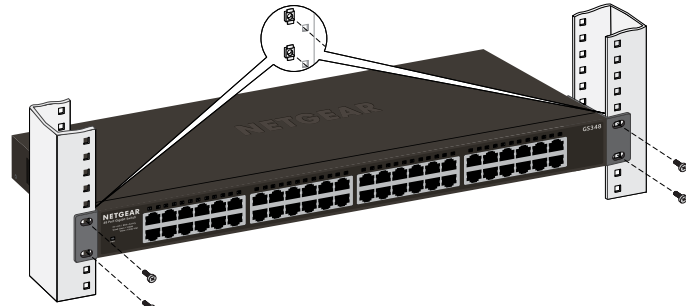
Rack-Mount the Switch

We recommend that you use the mounting brackets and screws that came with the switch.

1. Use a No. 2 Phillips screwdriver to attach the mounting brackets to the side of the switch.



- a. Insert the screws through a bracket and into the mounting holes in the switch.
 - b. Tighten the screws to secure the mounting brackets to the switch.
2. Use a No. 1 Phillips screwdriver to attach the switch with its mounting brackets to the rack.



- a. Align the mounting holes in the brackets with the holes in the rack and insert two pan-head screws through each bracket and into the rack.
- b. Tighten the screws to secure the mounting brackets to the rack.

Specifications

Specification	Description
Network interface	RJ-45 connector for 10BASE-T, 100BASE-TX, or 1000BASE-T
Network cable	Category 5e (Cat 5e) or better Ethernet cable
Gigabit Ethernet ports	48
Acoustic noise level	Fanless
Jumbo frames	9216 bytes
Energy Efficient Ethernet (EEE)	Yes
Auto power down	Yes
Short cable detection	Yes
Power consumption	100–240 VAC 50/60Hz, 1.4A maximum
Weight	6.95 lb (3.15 kg)
Dimensions (W x D x H)	17.3 in. x 8 in. x 1.7 in. (440 mm x 204 mm x 43.3 mm)
Operating temperature	32–122 °F (0–50 °C)
Operating humidity	0%–90% relative humidity, noncondensing

Support

Thank you for purchasing this NETGEAR product. You can visit www.netgear.com/support to register your product, get help, access the latest downloads and user manuals, and join our community. We recommend that you use only official NETGEAR support resources.

For the current EU Declaration of Conformity, visit http://kb.netgear.com/app/answers/detail/a_id/11621.

For regulatory compliance information, visit <http://www.netgear.com/about/regulatory/>.

See the regulatory compliance document before connecting the power supply.



201-21338-01



NETGEAR INTL LTD
Building 3, University Technology Centre
Curraheen Road, Cork, Ireland

NETGEAR, Inc.
350 East Plumeria Drive
San Jose, CA 95134, USA

© NETGEAR, Inc., NETGEAR and the NETGEAR Logo are trademarks of NETGEAR, Inc. Any non-NETGEAR trademarks are used for reference purposes only.

March 2017