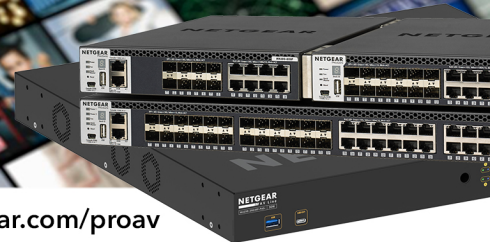


AV over IP Switch Use Case Guide



Find the right switch for your AV over IP project

www.netgear.com/proav

Standalone or Multi-Switch Audio/Video over IP

Dante, Q-SYS, AES67, AVB audio in single or multi-switch installations; NVX, AMX, NDI, SDVoE, etc. video in single or multi-switch installations

Model	SKU	Copper 1G	Copper 2.5G	Copper 10G	SFP 1G	SFP+ 10G	QSFP+ 40G	SFP28 100G	Management	PoE Type	PoE Ports / Budget	IGMP Support
-------	-----	-----------	-------------	------------	--------	----------	-----------	------------	------------	----------	--------------------	--------------

M4300 Managed Switches

M4300-28G	GSM4328S	24	-	2	-	2	-	-	IT GUI, CLI, API	-	-	NETGEAR IGMP Plus™ across multiple switches
M4300-28G-PoE+ (550W PSU)	GSM4328PA	24	-	2	-	2	-	-	IT GUI, CLI, API	PoE+	480W	
M4300-28G-PoE+ (1000W PSU)	GSM4328PB	24	-	2	-	2	-	-	IT GUI, CLI, API	PoE+	720W	
M4300-52G	GSM4352S	48	-	2	-	2	-	-	IT GUI, CLI, API	-	-	
M4300-52G-PoE+ (550W PSU)	GSM4352PA	48	-	2	-	2	-	-	IT GUI, CLI, API	PoE+	480W	
M4300-52G-PoE+ (1000W PSU)	GSM4352PB	48	-	2	-	2	-	-	IT GUI, CLI, API	PoE+	1,010W	
M4300-8X8F	XSM4316S	-	-	8	-	8	-	-	IT GUI, CLI, API	-	-	
M4300-12X12F	XSM4324S	-	-	12	-	12	-	-	IT GUI, CLI, API	-	-	
M4300-16X (299W PSU)	XSM4316PA	-	-	16 (Multi-Gig)	-	-	-	-	IT GUI, CLI, API	PoE+	199W	
M4300-16X (600W PSU)	XSM4316PB	-	-	16 (Multi-Gig)	-	-	-	-	IT GUI, CLI, API	PoE+	500W	
M4300-24X	XSM4324CSS	-	-	24	-	4	-	-	IT GUI, CLI, API	-	-	
M4300-24XF	XSM4324FS	-	-	2	-	24	-	-	IT GUI, CLI, API	-	-	
M4300-24X24F	XSM4348S	-	-	24	-	24	-	-	IT GUI, CLI, API	-	-	
M4300-48X	XSM4348CS	-	-	48	-	4	-	-	IT GUI, CLI, API	-	-	
M4300-48XF	XSM4348FS	-	-	2	-	48	-	-	IT GUI, CLI, API	-	-	
M4300-96X	XSM4396K0	-	-	Up to 96 (Multi-Gig)	-	Up to 96	Up to 24	-	IT GUI, CLI, API	PoE+	Up to 1,440W	

M4500 Managed Switches

M4500-32C	CSM4532	-	-	-	-	-	-	32	CLI, API	-	-	NETGEAR IGMP Plus™ across multiple switches
M4500-48XF8C	XSM4556	-	-	-	-	48 (SFP28)	-	8	CLI, API	-	-	

SUPPORT & DESIGN SERVICES

NETGEAR offers free design services to support partners as they design and deploy professional audio and video solutions which require IP networking infrastructure. This dedicated Pro AV Engineering Services team of experts has been conceived to empower those who are designing and installing AV over IP systems by providing free network design assistance, training, and installation support.

Simply send an email to: ProAVDesign@netgear.com



PRO AV TECHNICAL TRAINING

At NETGEAR we believe in working with our partners to empower them with the knowledge to create and sell solutions not just products. As part of this commitment, we offer free online training courses. These user-paced courses provide an overview of many concepts of networking as it pertains to AV signals. Join the academy: www.netgear.academy



Zero-touch install



Rapid deployment



High reliability



Easy expandability

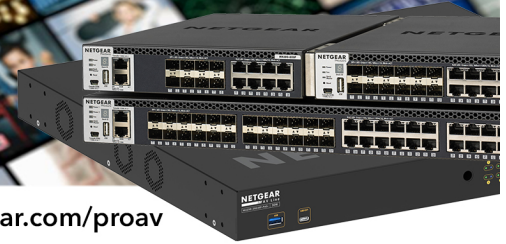


Dedicated engineering services team



Next business day replacement

AV over IP Switch Use Case Guide



Find the right switch for your AV over IP project

www.netgear.com/proav

Standalone or Multi-Switch Audio/Video over IP

Dante, Q-SYS, AES67, AVB audio in single or multi-switch installations; NVX, AMX, NDI, SDVoE, etc. video in single or multi-switch installations

Model	SKU	Copper 1G	Copper 2.5G	Copper 10G	SFP 1G	SFP+ 10G	QSFP+ 40G	SFP28 100G	Management	PoE Type	PoE Ports / Budget	IGMP Support
-------	-----	-----------	-------------	------------	--------	----------	-----------	------------	------------	----------	--------------------	--------------

M4250 AV Line Managed Switches

M4250-10G2F-PoE+	GSM4212P	10	-	-	2	-	-	-	AV GUI, IT GUI, CLI	PoE+	8 (125W)	NETGEAR IGMP Plus™ across multiple switches
M4250-10G2XF-PoE+	GSM4212PX	10	-	-	-	2	-	-	AV GUI, IT GUI, CLI	PoE+	8 (240W)	
M4250-10G2XF-PoE++	GSM4212UX	10	-	-	-	2	-	-	AV GUI, IT GUI, CLI	PoE++ (90W)	8 (720W)	
M4250-12M2XF	MSM4214X		12	-	-	2	-	-	AV GUI, IT GUI, CLI	-	-	
M4250-16XF	XSM4216F		-	-	-	16	-	-	AV GUI, IT GUI, CLI	-	-	
M4250-26G4F-PoE+	GSM4230P	26	-	-	4	-	-	-	AV GUI, IT GUI, CLI	PoE+	24 (300W)	
M4250-26G4F-PoE++	GSM4230UP	26	-	-	4	-	-	-	AV GUI, IT GUI, CLI	PoE++ (90W)	24 (1,440W)	
M4250-26G4XF-PoE+	GSM4230PX	26	-	-	-	4	-	-	AV GUI, IT GUI, CLI	PoE+	24 (480W)	
M4250-40G8F-PoE+	GSM4248P	40	-	-	8	-	-	-	AV GUI, IT GUI, CLI	PoE+	40 (480W)	
M4250-40G8XF-PoE+	GSM4248PX	40	-	-	-	8	-	-	AV GUI, IT GUI, CLI	PoE+	40 (960W)	
M4250-40G8XF-PoE++	GSM4248UX	40	-	-	-	8	-	-	AV GUI, IT GUI, CLI	PoE++ (90W)	40 (2,880W)	

Standalone Audio over IP

Dante audio in single switch installations

Model	SKU	Copper 1G	Copper 2.5G	Copper 10G	SFP 1G	SFP+ 10G	QSFP+ 40G	SFP28 100G	Management	PoE Type	PoE Ports / Budget	IGMP Support
-------	-----	-----------	-------------	------------	--------	----------	-----------	------------	------------	----------	--------------------	--------------

Smart Switches

GS110TPv3	GS110TP	8	-	-	2	-	-	-	Local GUI or Insight Cloud	PoE+	8 (55W)	Yes
GS110TPP	GS110TPP	10	-	-	-	-	-	-	Local GUI or Insight Cloud	PoE+	8 (120W)	Yes
MS510TXPP	MS510TXPP	4	4	1	-	1	-	-	Local Web GUI	PoE+	8 (180W)	Yes
MS510TXUP	MS510TXUP	-	4	4	-	-	-	-	Local GUI or Insight Cloud	PoE++ (60W)	8 (295W)	Yes

Control Networks

Ethernet (data)

Model	SKU	Copper 1G	Copper 2.5G	Copper 10G	SFP 1G	SFP+ 10G	QSFP+ 40G	SFP28 100G	Management	PoE Type	PoE Ports / Budget	IGMP Support
-------	-----	-----------	-------------	------------	--------	----------	-----------	------------	------------	----------	--------------------	--------------

Plus Switches

GS105E	GS105E	5	-	-	-	-	-	-	Web Managed	-		Yes
GS108PE	GS108PE	8	-	-	-	-	-	-	Web Managed	PoE	4 (53W)	Yes

PRO AV VIDEOS

We understand that knowledge is power. That's why we have created a number of videos to help you understand Networking for AV and how our products excel. From detailed configuration information to short Tech Tips, you'll find all of our videos on our YouTube Channel. www.netgear.com/proavideo



Zero-touch install



Rapid deployment



High reliability



Easy expandability



Dedicated engineering services team



Next business day replacement