



NETGEAR[®]

ReadySHARE Printer

Easy to Set Up: Instructions

350 East Plumeria Drive
San Jose, CA 95134
USA

October 2011

© 2011 NETGEAR, Inc. All rights reserved

No part of this publication may be reproduced, transmitted, transcribed, stored in a retrieval system, or translated into any language in any form or by any means without the written permission of NETGEAR, Inc.

Technical Support

Thank you for choosing NETGEAR. To register your product, get the latest product updates, get support online, or for more information about the topics covered in this manual, visit the Support website at <http://support.netgear.com>.

Phone (US & Canada only): 1-888-NETGEAR

Phone (Other Countries): Check the list of phone numbers at http://support.netgear.com/app/answers/detail/a_id/984.

Trademarks

NETGEAR, the NETGEAR logo, and Connect with Innovation are trademarks and/or registered trademarks of NETGEAR, Inc. and/or its subsidiaries in the United States and/or other countries. Information is subject to change without notice. Other brand and product names are registered trademarks or trademarks of their respective holders. © 2011 NETGEAR, Inc. All rights reserved.

Statement of Conditions

To improve internal design, operational function, and/or reliability, NETGEAR reserves the right to make changes to the products described in this document without notice. NETGEAR does not assume any liability that may occur due to the use, or application of, the product(s) or circuit layout(s) described herein.

ReadySHARE Printer

ReadySHARE Printer lets you connect a USB printer to the router's USB port, and share it among Windows and Mac computers on the network.

Set Up ReadySHARE Printer

➤ **To set up ReadySHARE Printer:**

1. Connect the USB printer to the router's USB port with a USB printer cable.
2. Install the USB printer driver software *on each computer* that will share the printer. If you do not have the printer driver, contact the printer manufacturer to find and download the most recent printer driver software.
3. On each computer that will share the printer, download the NETGEAR USB Control Center utility. The NETGEAR USB utility has a Mac version and a Windows version, which you can access from the ReadySHARE Printer area of this URL:
<http://www.netgear.com/readysshare>.

ReadySHARE® Printer

Wirelessly print from your home network to a connected USB printer

- » **Easy to Set-up: Instructions**
- » **PC Utility**
- » **MAC Utility**

Supported Routers: WNDR4500, WNDR3800, WNDRMAC



Note:

- You *must* install this utility before you can use the ReadySHARE Printer feature.
- For the ReadySHARE Printer feature to work, this utility must be run in the background.

4. Follow the instructions to install the NETGEAR USB Control Center utility.

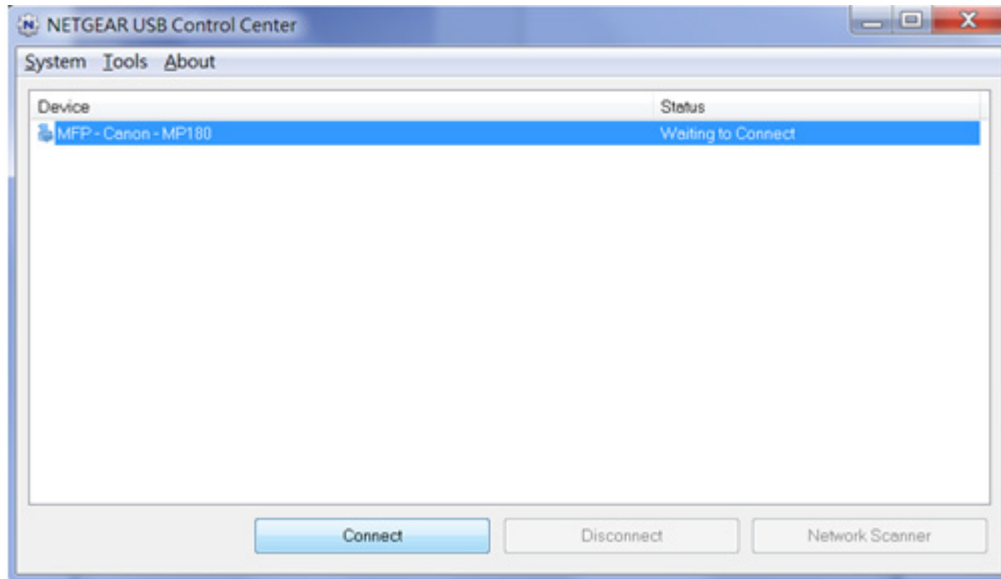


5. After you have installed the utility, select the language.

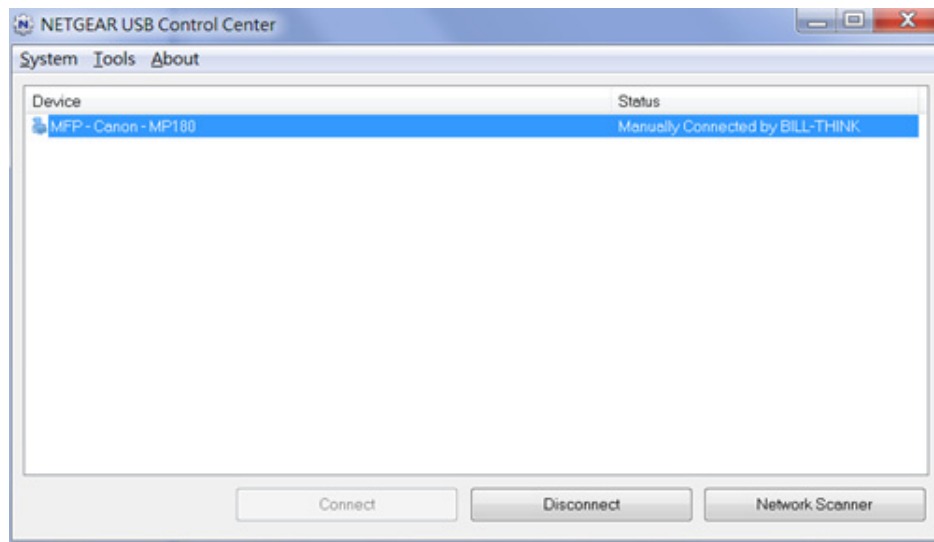


ReadySHARE Printer

6. If this is the first time you are accessing the utility, you are asked to select the printer and click the **Connect** button.

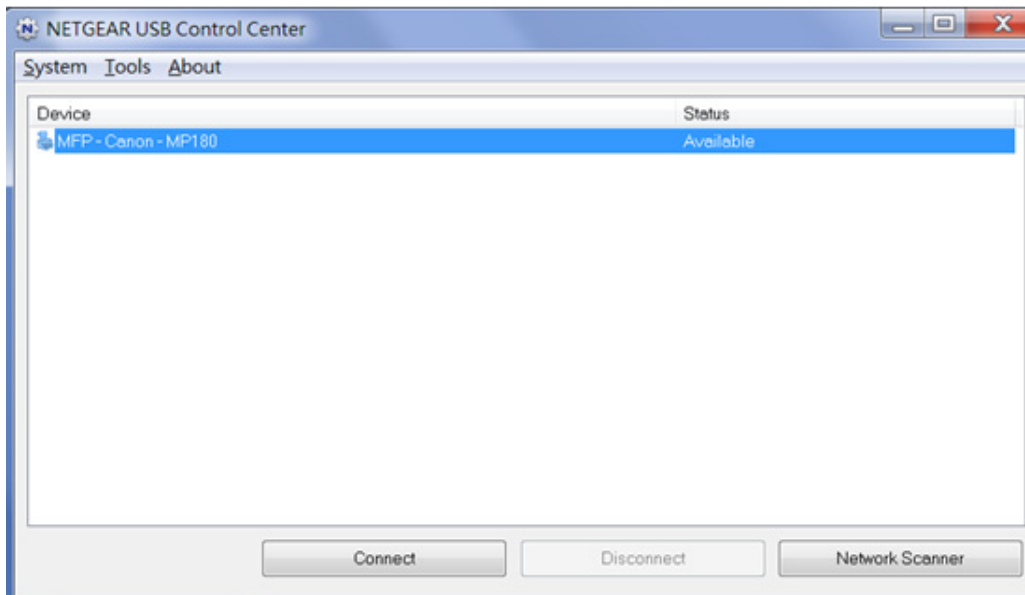


Once the connection is established, the status changes to Manually connected by xxx.



ReadySHARE Printer

Note that you can click the **Disconnect** button at any time to release the connection. The status then changes to Available.

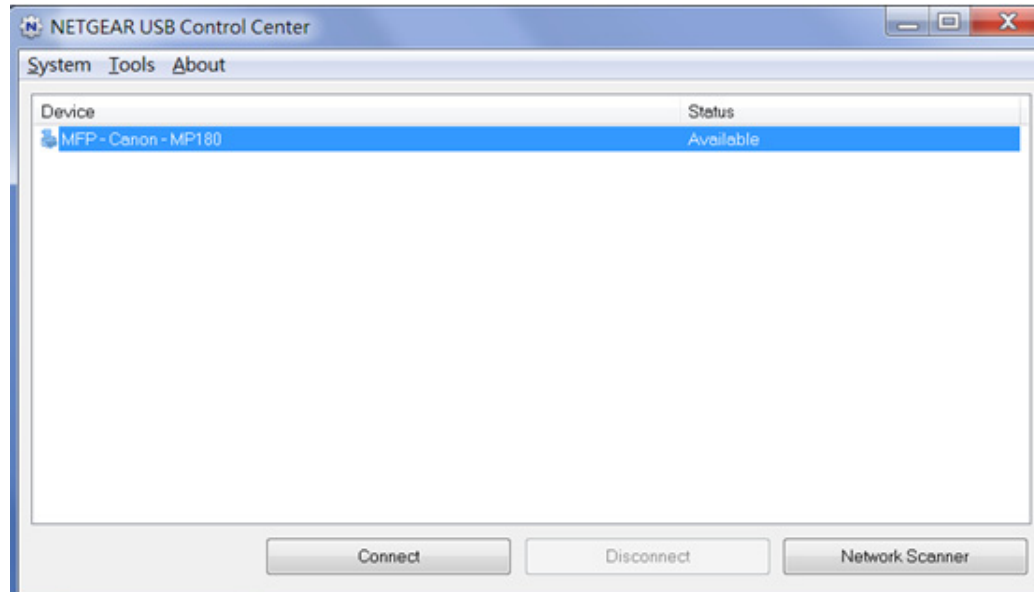


Once the Connect button has been clicked once on all of the computers in the network, the utility on each of them automatically handles the printing queue and handling. The status of the printer should appear as Available on all of the computers.

ReadySHARE Printer

Note:

- When the status is Available, you can use the USB printer.
- When the status is Manually connected by xxx, only the xxx computer can use the printer. Other network devices must wait until the xxx computer has released the connection, or until the connection times out (the default time-out value is 30 seconds).
- You can set the value for the default time-out time from the Tools > Configuration screen.



- The USB Control Center utility must be running for the computer to be able to print to the USB printer attached to the router. If you exit the utility, printing does not work.
- Some firewall software, such as Comodo, blocks the ReadySHARE Print utility from accessing the USB printer. If you do not see the printer in the utility, you can disable the firewall temporarily to allow the utility to work

7. If your printer supports scanning, make sure that the printer is in the Available state, and click the **Network Scanner** button. This activates the Scanner window so you can use the printer for scanning.

