

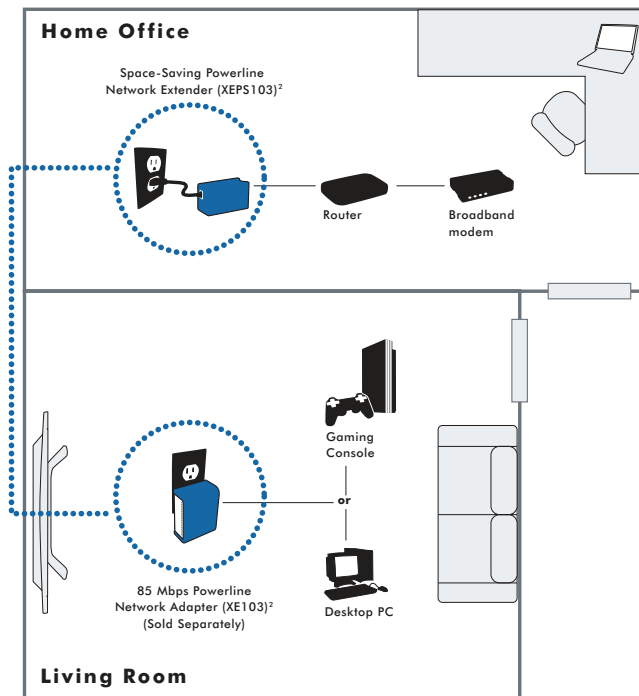
Plug and play connection of a Powerline network



- Extends secure 14 and 85 Mbps Powerline network connections to any electrical outlet
- Reduces clutter on power outlets—one plug supplies both power and network extensions
- Simple plug and play installation

Features

- Transforms any electrical outlet into an Ethernet network connection
- Connects to any router's Ethernet port and extends the network via powerline
- Space-saving 2-in-1 design uses only 1 power outlet when used with many NETGEAR routers
- Compatible with HomePlug 1.0 Powerline devices



NETGEAR Compatible Products

for XEPS103 Power Supply (12V/1A)³

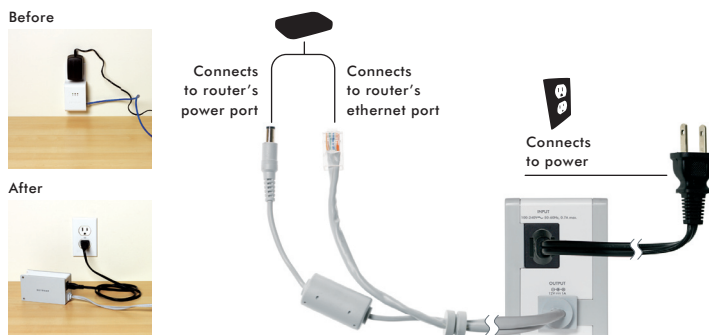
- RangeMax NEXT Wireless-N Router (WNR834B)
- RangeMax NEXT Wireless-N Router (WNR834M)
- RangeMax Wireless Router (WPN824)
- RangeMax Wireless Access Point (WPN802)
- Super-G Wireless Firewall Router (WGT624)
- Wireless-G Router (WGR614)
- Open source Wireless-G Router (KWGR614)
- ProSafe VPN Firewall 8 w/8-Port 10/100 Mbps Switch (FVS318)
- ProSafe 5-Port Gigabit Desktop Switch (GS105)
- 5-Port Gigabit Desktop Switch (GS605)
- 8-Port Gigabit Desktop Switch (GS608)
- ProSafe 802.11 Wireless Access Point (WG102)

³ XEPS103 Ethernet connector does not require power supply to be connected



Simple plug and play

The XEPS103 Powerline Network Extender extends secure 14 and 85 mbps network connections to any electrical outlet in your home. The network extender connects to any router's Ethernet port and extends the network via Powerline. The space saving 2-in-1 design reduces clutter and uses only one power outlet when used with many Netgear routers. One plug supplies both power and network extension. The XEPS103 is a simple plug and play installation and is compatible with HomePlug 1.0 Powerline devices. The XEPS103 requires use with NETGEAR XE102, XE103, XE104.



System Requirements

- Configuration Utility: Microsoft® Windows® Vista™, XP, 2000, ME, or 98SE

Network Protocol Compatibility

- 1 IEEE 802.3 (10Base-T), IEEE 802.3u (100Base-Tx), IEEE 802.3x (Full-duplex flow control)

Ports

- 10/100 Mbps Ethernet port
- Auto-Negotiation
- Auto Uplink

Environmental Specifications

- Operating Temperature: 0–40° C
- Operating Humidity: 10~90% RH (max)
- Storage Temperature: -25–70° C
- Storage Humidity: 5~95% RH (max)

Power Supply

- Input: AC 100-240V
- Output: DC 12V/1A

Status LEDs

- Power LED
- PowerLine Link/ACT LED
- Ethernet Link/ACT LED

Functions

- Security Network ID
- Diagnostics

HomePlug

- HomePlug v1.0 compatible
- Data Transfer Rate: Up to 85 Mbps, real throughput greater than 25 Mbps
- Frequency Band: 4.3~20.9MHz
- Modulation: OFDM symble modulation

Security

- 56-bit DES encryption

Physical Specifications

- Dimensions: 46 x 70 x 125 mm (1.81 x 2.76 x 4.9 in)

Warranty

- NETGEAR 1-year warranty

Package Contents

- Space-Saving Powerline Network Extender (XEPS103)
- Power Cord
- Installation Guide
- Setup CD
- Warranty Card
- Support and Information Card

NETGEAR Related Products

- Network RangeMax Wireless Router (WPN824v2)
- Super-G Wireless Router (WGT624)
- Wireless-G Router (WGR614)
- 54 Mbps Wall-Plugged Wireless Range Extender Kit (WGX102)
- Wall-Plugged Ethernet Bridge (XE102)
- 85 Mbps Powerline Network Adapter (XE103)
- Wall-Plugged Ethernet 4 Port Switch (XE104)
- 5-Port Fast Ethernet Switch (FS605)
- 8-Port Fast Ethernet Switch (FS608)
- 5-Port Gigabit Desktop Switch (GS605)
- 8-Port Gigabit Desktop Switch (GS608)
- ProSafe 802.11G Wireless Access Point (WG102)
- Printer USB Print Server (PS121)

NETGEAR®

4500 Great America Parkway
Santa Clara, CA 95054 USA
1-888-NETGEAR (638-4327)
E-mail: info@NETGEAR.com
www.NETGEAR.com

© 2007 NETGEAR, Inc. NETGEAR, the NETGEAR logo, Connect with Innovation, Everybody's connecting, the Gear Guy logo, IntelliFi, ProSafe, RangeMax and Smart Wizard are trademarks or registered trademarks of NETGEAR, Inc. in the United States and/or other countries. Microsoft, Windows, and the Windows logo are trademarks or registered trademarks of Microsoft Corporation in the United States and/or other countries. Other brand and product names are trademarks or registered trademarks of their respective holders. Information is subject to change without notice. All rights reserved.

*Free basic installation support provided for 90 days from date of purchase. Advanced product features and configurations are not included in free basic installation support; optional premium support available.

**Actual performance may vary due to operating conditions

D-XEPS103-1