



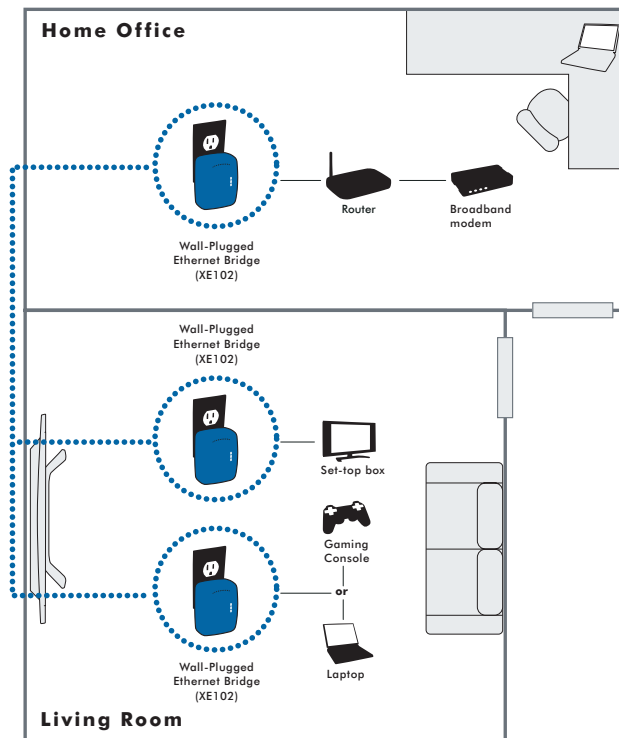
## Turns Any Electrical Outlet into a Network Connection

- Extends home networks by using existing electrical wires (kit contains everything you need)
- Delivers 14 Mbps wired speed
- Simple plug-and-play installation

### Features

- Turns electrical sockets into home network/Internet connection
- Simply plug one XE102 into your router and a second XE102 into the device you wish to network
- Encryption ensures privacy and security

### Plug-and-play connection of a Powerline Network



For a simple way to bring the Internet to any room, look no further than NETGEAR's Powerline Ethernet Adapter. It plugs into an electrical outlet and uses your existing electrical wiring to give your entire household access to your Cable/DSL connection. With no expensive new wiring or cabling to install, you can surf the Web, participate in online gaming, send and receive e-mail, and share files and printers, all from different rooms at the same time. The XE102G Powerline Network Kit plugs right into a wall outlet, reducing clutter and saving valuable desk space. Designed for ease of use, it has new, easy-to-read icon LEDs, and protects your network communications from eavesdroppers and hackers, while not increasing your electricity bill.

#### System Requirements

- To enable encryption: Windows® 98, ME, 2000 and XP
- For device connection: Available RJ-45 Ethernet Port

#### Dimensions

- Size: 99.4 x 46.6 x 73 mm (3.92 x 1.84 x 2.88 in)
- Weight: 224 g (7.9 oz)

#### Environmental Specifications

- Operating temperature: 0° C to 40°C (32 to 104°F)
- Operating relative humidity: 10% to 90% (noncondensing)

#### Electromagnetic Emissions

- FCC Part 15 Class B

#### Power and Safety Regulations:

- U/L Certified

#### Typical Coverage

- Up to 5000 square foot home

#### Network Ports

- One 10BASE-T Ethernet port
- One 14 Mbps Powerline port

#### Network Interface

- RJ-45 (10BASE-T Ethernet)
- Electrical plug (Powerline Ethernet)

#### Performance Standards

- 10 Mbps 10BASE-T
- 14 Mbps HomePlug 1.0 compatible

#### Powerline Standards

- HomePlug compatible

#### Ethernet Standards Compliance:

- HomePlug

#### Ethernet Standards Compliance

- IEEE 802.3 10BASE-T Ethernet

#### Modulation Schemes

- OFDM Symbol Modulation DQPSK, DBPSK, ROBO Carrier Modulation

#### Frequency Band

- 4.3 MHz ~ 20.9 MHz

#### Additional Protocols

- Forward Error Correction (FEC)
- Automatic channel adaptation

#### Power Supply

- 85 to 135v @ 60 Hz Internal

#### LEDs

- Unit: Power
- Powerline: Link
- Ethernet: Link/Activity

#### Warranty

- 3 year warranty

#### Package Contents

- Two XE102 14 Mbps Powerline Ethernet Adapters
- Installation guide
- Ethernet Cable
- Resource CD
- Warranty/Support information card

# NETGEAR®

4500 Great America Parkway  
Santa Clara, CA 95054 USA  
1-888-NETGEAR (638-4327)  
E-mail: info@NETGEAR.com  
www.NETGEAR.com

© 2007 NETGEAR, Inc. NETGEAR, the NETGEAR logo, Connect with Innovation, Everybody's connecting, the Gear Guy logo, IntelliFi, ProSafe, RangeMax and Smart Wizard are trademarks or registered trademarks of NETGEAR, Inc. in the United States and/or other countries. Microsoft, Windows, and the Windows logo are trademarks or registered trademarks of Microsoft Corporation in the United States and/or other countries. Other brand and product names are trademarks or registered trademarks of their respective holders. Information is subject to change without notice. All rights reserved.

\*Free basic installation support provided for 90 days from date of purchase. Advanced product features and configurations are not included in free basic installation support; optional premium support available.

\*\*Actual performance may vary due to operating conditions

D-XE102G-1